

The background of the cover is a photograph of a cattle show. In the foreground, a brown Simbrah cow with a white blaze on its face stands on a green artificial turf floor. A person's hand is visible on the right, holding the cow's lead. In the background, another black and white cow is being handled by a person in a pink shirt. To the left, a man in a cowboy hat and vest stands with his back to the camera. A yellow and black banner hangs in the background. The text 'SIMBRAH' is in green, 'World' is in purple, and 'SPRING • 2015' is in green. The title '2015 National Show' is in orange at the bottom left.

# SIMBRAH World SPRING • 2015

2015 National Show



# Best of the Breed.

Southwestern Farms entered the Simbrah/Simmental business with the goal of being one of the top programs in the breed. With that goal—there's only one place to start and that's with the best. We've assembled a superior herd sire battery and we are mating them to our elite cow family members to give us an annual calf crop with real potential for greatness. We're reaching our goal with individuals like these. Visit our website to learn more about our program!



**RFI Top Duchess 378A –**

A NF Smith Sargeant daughter out of our donor, LMC Topanga 5T/58 cow that also produced RFI Debutante, a many time champion. Duchess was the 2015 National Reserve Junior Division champion.



**Smith Mi Cara Bella 312Z –**

A daughter of Smith Satisfies and out of Smith Ciao Bella, an International Grand Champion, out of Smith Nu Approach and Smith Bella Bella. 2015 National Senior Champion Female.



**Smith SWFS Divas Nu Mark –**

This herd sire is sired by Smith Satisfies and his dam is the Smith Wentz Diamond Diva, 2014 International Grand Champion Female. He ranks in the top 15% of the breed for API and top 2% for TI. He was the 2015 National Reserve Grand Champion Bull.



**Smith Shimmer N Black 501A –**

A three-quarter blood female, sired by Smith Williams N Black, out of a Top Shell bred female. She was the 2015 National Percentage Show Reserve Grand Champion Female.

*Thank you to our synergy buyers:  
ZN Ranch, Hayden Hackett, Ronnie Reeves,  
Monte Christo Ranch, Kathy Hutto, Mark and Lisa Noack,  
Smith Genetics and Bob Buresh.*

*SOUTHWESTERN*  
Farms

Ray and Suzanne Hill Family  
807 PR 5215 • Kirbyville, Texas 75958  
409/423-9060 or 409/651-2792  
southwesternfarms@gmail.com or  
sampaamore@yahoo.com



# MAKIN' THINGS HAPPEN

# Right

THE SELECT INDIVIDUALS CHOSEN FOR OUR PROGRAM REPRESENT THE QUALITY AND PERFORMANCE GOALS, WHICH WE ESTABLISHED WHEN WE DECIDED TO TAKE OUR REGISTERED PROGRAM TO THE HIGHEST LEVEL. EACH INDIVIDUAL IS SELECTED WITH THE GOAL OF IMPROVING OUR HERD AND THOSE OF OUR CUSTOMERS.

JUST TAKE A LOOK AT THESE MEMBERS OF OUR HERD. PLUS WE WANT TO ANNOUNCE THAT WE HAVE PURCHASED BREEDING SHARES IN SMITH MCCRARY FIREBALL, SMITH DETONATOR AND SMITH ISGRIG ADVANTAGE, A 3/4 BROKER X BELLA BELLA SON.



Smith JJ Dancing Moves 211A

THIS IS A SECOND GENERATION MEMBER OF THE SHE MOVES FAMILY. HER DAM, IS SMITH MOVING FUN, A SHE MOVES X HIDE N SEEK BRED FEMALE. DANCING MOVES IS Sired BY SATISFIES AND HAS LOTS OF INTERNAL DIMENSION. SHE WILL BE PART OF OUR DONOR LINEUP IN THE FUTURE.

Thank you to our buyers at Simbrah Synergy: Grayson and Lexington Higgins, Monte Christo Cattle Co., Bob Buresh, Winston Walters, Pine Ridge Ranch, McCrary Farms, Hallie Hackett, and Burch Farms.

## Nieschwietz 7N Ranch

### PETE NIESCHWIETZ

P.O. BOX 303 • FALLS CITY, TX 78113

(956)460-6002 • PJNIESCHWIETZ@SBCGLOBAL.NET

WWW.7NRANCH.NET

Ranches located in Donna and Falls City



Smith Na Wave II

WE HAVE ADDED THIS GENETIC POWERHOUSE SIRE TO OUR PROGRAM BY PURCHASING SEMEN PACKAGES. HE HAS DOMINATED THE BREED'S SALE RINGS, SHOW RINGS AND PASTURES, PLUS RANKED AT THE TOP OR IN THE TOP OF EPD RANKINGS FOR YEARS.



Smith Martha 504Z

A POLLED PUREBRED SIMBRAH, Sired BY RFI SMITH THUNDERSTRUCK. SHE IS THE NEXT GENERATION OF THE ANNIE LOU FAMILY, AS HER DAM IS SMITH MDM GLAMOUR, A SMITH ANNIE LOU X PRR RED AMMO 506P BRED INDIVIDUAL. SHE JUST PRODUCED AN EXCITING BULL CALF BY SMITH SATISFIES AND WILL BE ENTERING OUR DONOR PROGRAM SHORTLY.



Smith Isgrig Charismatic

The #s  
Don't Lie:



He Ranks In The Top 1% Of The Breed For:

Birth

Weaning

Yearling

Maternal Weaning Weight

All Purpose Index

Terminal Index

**And He's Producing  
Progeny Like This:**



This Smith Isgrig Charismatic sired purebred heifer was one of the top selling females in the recent Simbrah Synergy Sale. She sold to 7N Ranch for \$19,000 and was bred in the Smith Genetics program.

**Semen Packages For Foreign Sales Only  
For Charismatic Calves Call Us!**

Smith Genetics 512/587-7896

Reavis Farms 956-/585-6831

Burch Farms 713/206-2579

McCrary Farms 903/278-6819

7N Ranch 956/460-6002

Email inquiries to smithgenetics1@gmail.com



## Features...

- 10** National Show 2015 Coverage  
Complete information on the winners of the 2015 National Simbrah and National Percentage Simbrah Show.
- 22** Building A Bud Box  
Detailed description of how to build a Bud Box to make cattle handling more efficient and easier.
- 28** AJSA Classic Coming To Texas  
The 2015 AJSA National Classic is coming to Texas in July and it's going to provide a large platform for showcasing Simbrah.

## Of Interest...

- 3** News You Can Use
- 18** Sales And Events Reports
- 39** Save The Date
- 39** Index To Advertisers

## On The Cover...

Scene from the 2015 National Show.  
Photography by Show Champions.



# SIMBRAH World

SPRING, 2015 • VOLUME VI, NUMBER 1

## Southern Livestock Publishing, Inc.

### Mailing Address:

P.O. Box 791364 • San Antonio, TX 78279-1364

**Office Located:** 407 Breesport • San Antonio, TX 78216

**Phone:** 210/524-9697 • **Fax:** 210/524-9690

**E-mail:** slivestock@southernlivestock.com

[www.southernlivestock.com](http://www.southernlivestock.com)

**Publishers:** Jim Banner and Michael Sturgess

**Editor:** Daren A. McCutchen

**Contributing Editor:** Martha Hollida Garrett

**Office Manager/Bookkeeping:** Jean Tiedeman

### Livestock Advertising:

Martha Hollida Garrett ..... Mob. 903/316-8465

### Commercial Advertising:

Loren Jackson - Manager ..... 210/867-5553

### Copy & Contract Regulations:

The Publishers reserve the right to accept or refuse advertising. The Publishers reserve the right to label as "Advertisement" any copy that simulates editorial comment.

Advertiser agrees to waive the Publishers and its employees of responsibility from any and all claims or suits arising out of publication of advertising based on information supplied by the advertiser or his agent.

The Publishers hereby expressly limit their liability resulting from any and all misprints, errors and/or the running of a corrected advertisement or editorial correction notice.

The views and opinions expressed in all editorial material are those of the writer or persons interviewed and not necessarily those of the Publishers.

Your viewpoint and opinions are welcome. The Publishers will make every effort to publish responsible replies. The Publishers however, reserve the right to edit or reject material which they deem objectionable.





## South Central ASA Trustee election results

Fred Schuetze of Granbury, Texas has been elected by the American Simmental Association (ASA) member-



Fred Schuetze, Granbury, Texas was recently elected to the American Simmental Association Board of Trustees.



Tim Smith, Giddings, Texas will serve on the American Simmental Association Board of Trustees Executive Board as treasurer for the coming year.

ship as a member of the ASA Board of Trustees.

Schuetze was a member of the ASA Board from 2000 to 2005, including one year as chairman. He has been director of livestock operations for Buzzard Hollow Ranch since 1992, a 6,000-acre enterprise featuring an 800-head cowherd, comprised of Fleckvieh plus Simbrah, SimAngus and Red Angus. Their Fleckvieh genetics trace back to original German and Austrian cattle, although a high percentage of females are South African-based. Embryo transfer is used extensively to accelerate BHR's breeding program. Schuetze, who holds a B.S. degree from Southwest Texas State and an M.S. from Texas A&M, worked as a county agent from 1968 until 1979 when he transitioned to ranch management. He has been an industry leader, serving as president of the Texas Simmental/Simbrah Association, chairman of the Fullblood Fleckvieh Federation, and second vice president of the World Simmental Fleckvieh Federation among many organizations. Schuetze and his wife, Judy, are parents of two

adult children and two grandchildren.

Schuetze joins Jon Willis, Marietta, Oklahoma, who was re-elected as a trustee; Blake Nelson, Warner, Oklahoma and Tim Smith, Giddings, Texas as representatives for the south-central region.

Smith was recently elected as treasurer at the annual meeting held in Denver and will serve on the ASA executive board for the coming year.

## Russell Boening elected Texas Farm Bureau president

Simbrah breeder, Russell Boening of Floresville was elected Texas Farm Bureau (TFB) president in December 2014. Boening grows feed grains, cotton, watermelons and wheat, as well as operating a 450-cow dairy with his brother and father and a beef cattle operation, which includes registered Simbrah near Floresville. He was chosen as the TFB Outstanding Young Farmer & Rancher in 1986. Boening has held every office on the Wilson County Farm Bureau board, serving for

(Continued on page 8)

# We've Got Our Program ON THE MOVE!

We purchased the female, Smith Moving Fun because we felt she could make an impact quickly on our herd and she has! Moving Fun is out of the great LM She Moves cow and Smith Hide N Seek. Her daughter, Smith JJJ Dancing Moves, sired by Satisfies, was one of the premier lots in the recent Synergy offering and she made a lot of friends. We want to thank the Nieschweitz Family of 7N Ranch for purchasing her from us and our partner, Smith Genetics for \$14,500. We are flushing Moving Fun to several sires at this point and invite you to watch the impact Moving Fun and her daughter, Dancing Moves make on the breed.

We've also added the breeding power of Smith Detonator, a Satisfies x Smith Ciao Bella son. We are excited about his calves that will be arriving this fall!

Also thank you to our other Synergy buyers: Circle F Farms, Jeremy Friedrich, Randy Keithly, Payton Cox, Carpenter Ranch, Logan Perry, Monte Christo Ranch, Reavis Farms, Bob and Tammy Maiorano, Mark and Lisa Noack, Smith Genetics, Wentz Farming Co., Winston Walters and Lisa Naïve. We appreciate your choice of our genetics.



Smith JJJ Dancing Moves-a daughter of our donor, Smith Moving Fun and Smith Satisfies. She sold in Synergy to 7N Ranch.



Smith Detonator 321A- We have purchased natural breeding rights with additional breeding shares in this young herd sire prospect. We own him with Smith Genetics, Reavis Farms, 7N Ranch, and Southwestern Farms.

## Triple J Ranch/Tortorici

Jake and Amber Tortorice 409/782-5892 or 409/287-3234  
Jake and Mary Tortorice • Sour Lake, Texas • jt@raosbakery.com



# Generation Next



LMC Rhino-The 2012 International Grand Champion . He is a son of an international champion, LMC Full House. He carries an 1/8th Fleckvieh and that gives his calves just that desired extra muscle. Rhino sired LMC Gold Medal, the 2013 National Champion Bull.

Just look what's on the ground and representing the next generation of Rhino sired calves at La Morra! We are so thrilled with how this bull is working. We have calves or expecting calves from him with the following La Morra donors: LMC Knockout Muneca 5M/9, J7N BCC What-A-Delight, J7N What-A-Lady and LMC Tatiana. The future is looking very promising with this generation next!



Rhino x M9 baby .



Rhino x Tatiana baby .



Rhino x M9 baby .

Please visit our website [www.lamorracattle.com](http://www.lamorracattle.com) or follow us on Facebook for additional information about our program.

Look for our cattle in the upcoming sales:  
MAS X Online Sale April 19-20  
The Elite Online Sale May 9th

*La Morra Cattle Co.*  
Registered Simbrah  
**LR**

Joe B. & Nelda Rodriguez  
2854 CR 331 • Floresville, TX 78114  
830-393-8338 home/fax • 210-275-0839 mobile  
[www.lamorracattle.com](http://www.lamorracattle.com) • [joeb@lamorracattle.com](mailto:joeb@lamorracattle.com)



# Planned Progress.

## Even In The 3rd Generation

*It's a family thing at Smith Genetics and it all starts with our cow families! Just take a look at the latest products of our matriarchs, Bella Bella, Priceless and She Moves. We thought their daughters were something — well now look at the next generation of greatness.*



**Smith Bella Bella** — Recognized as one of the strongest matriarchs of the breed. She is the grandmother to Sophie Palmore's Smith Mi Bella Cara, who is a Smith Satisfies x Smith Ciao Bella daughter.



**Smith Mi Bella Cara**  
2015 National Senior  
Champion Female



**Smith Priceless** — Appropriately named at a young age and now the producer of over \$350,000 in revenue. Her granddaughter, Smith Walters Pure Passion, is currently being campaigned by Winston Walters and is out of Smith Priceless Passion.



**Smith Walters Pure Passion**



**LM She Moves** — One of the most proven lines in the breed and one we brought in from outside our program. She is the grandmother to Smith JJJ Dancing Moves, a Smith Satisfies daughter that was one of the highest selling females in the recent Simbrah Synergy Sale, purchased by 7N Ranch. Her dam is Smith Moving Fun.



**Smith JJJ Dancing Moves**

Thank you to our Synergy buyers: Bob and Tammy Maiorano, 7N Ranch, Triple J Ranch, Coronado Cattle Co., McCrary Farms, Hayden Hackett, Lisa Naïve, Higgins Family, Monte Christo Ranch, Bob Buresh, Winston Walters, Pine Ridge Ranch, Chloe and Barrett Novak, Reavis Farms, Southwestern Farms, Ronnie Reeves, Diamond RF Farms, Jim & Joann Stacey, Hensgens Brothers, Kathy Hutto, MacKenzie Powell, and Mark & Lisa Noack.

*Smith*  
**GENETICS**

Tim Smith • Joel Isgrig • Haley Smith  
P.O. Box 330 • 1316 PR 2231 • Giddings, Texas 78942  
512/587-7896 • smithgenetics1@gmail.com

[www.smithgenetics.com](http://www.smithgenetics.com)





## News...

(Continued from page 5)

more than 20 years, including president for 10 years. To learn more about his position and background visit <http://simbrahworld.com/images/index/2015/RBoeningStory.pdf>.



The Boening family photographed at the Texas Farm Bureau convention.

### La Muneca announces event/sales

La Muneca Cattle Co., (LMC) Linn, Texas will host their annual \$ellabration

event the last weekend of March. The LMC Jackpot show will be Friday afternoon, March 27th at 4 p.m. and will award \$10,000 in prizes and monies. One-half of the total will be awarded in the showmanship show. On Saturday, March 28th the LMC \$ellabration families will host the LMC \$ellabration \$20,000 Show. Both shows have contests for Brahman, Simbrah and Simbravieh cattle purchased from the sponsors.

In addition, their LMC GenePlus VII Online Sale will kickoff March 28 and run through March 31st. Many of the lots in this offering will be available for viewing during the weekend events.

The weekend will conclude with dinner and entertainment on Saturday evening.

"We want to invite everyone to the ranch for this big weekend of events. We look forward to hosting our junior families and awarding these kids for their efforts," stated Carlos Guerra, LMC owner.

For additional details visit [www.lamunecacattle.com](http://www.lamunecacattle.com) or call them at 956/802-1641.

**LMC \$10,000 Jackpot Show**  
**March 27th, 2015 - 4 p.m.**  
**LMC \$ellabration \$20,000**  
**Jr. Shows IV**  
**March 28th, 2015 - 9 a.m.**  
**LMC GenePLUS Online Sale VII**  
**March 28th – March 31, 2015**

### The Elite set for May 9th

Reese Hagan, Hagan Cattle Co. announces that The Elite Simmental-Simbrah event will be held on May 9th. The \$25,000 show will be held on May 9th following the live close out of the sale, which opens on May 6th. For additional information view [www.theelite-sale.com](http://www.theelite-sale.com) or contact Hagan at 361/293-4721 or [reesehagan@aol.com](mailto:reesehagan@aol.com).

### AJSR set for June 23-25

The American Junior Simbrah Roundup (AJSR) will be held June 25-27 at the Wharton County Youth Fair Complex, Crescent, (Wharton) Texas. The event is a highlight of the year for young Simbrah exhibitors. Full details of the event and be found at [www.simbrahroundup.net](http://www.simbrahroundup.net).

(Continued on page 36)

## STARTING WITH A GENETIC EDGE

We have just started a Simbrah program and we have started a very good one. To lead our program, we have chosen LMC 6G Red Rock, the 2012 International Grand Champion and Reserve National Champion Bull. We purchased him for his length, deep cherry red color, extension in his front one-third and we see him as a bull that can change a lot of cattle and make an impact! He brings the genetic potential of his sire, LMC Rocco, a producer of champions and his dam is the great LMC WFC Ms Dream Girl, who has rewritten the breed's history books. That combination is bound to be a GENETIC EDGE!

In addition, we have purchased females from RX Simbrah Ranch, Filegonia Cattle Co., Smith Farms, Tom Brothers Ranch, La Negra Cattle Co., RGV Cattle Co., La Muneca, Pine Ridge Ranch and a great set of heifers from 6G Ranch!

We think we've got the GENETIC EDGE and we are looking forward to being involved in the Simbrah breed.



**LMC 6G RED ROCK Breeding Shares For Sale**  
10 units of semen for \$800, volume discounts available.

**BAR 5L FARMS || H3 HARRIS FARMS SIMBRAH**

Lincoln Lecompte and Josh Harris

8424 Greenwood Spring Ridge Road, Greenwood, LA 71033 || 903-754-2094 || [llecompte@sersl.com](mailto:llecompte@sersl.com)



# Thank You Thank You Thank You

We want to thank Jud and Margie Flowers, Monte Christo Ranch and Ray and Suzanne Hill, Southwestern Farms for purchasing our lots in the Simbrah Synergy VII Sale!

We appreciate your evaluation of our program and look forward to following the progress of these individuals in their herds and the breed.



Jud and Margie Flowers, Monte Christo Cattle Co. who purchased our Smith Nu Approach daughter and Sargeant granddaughter. Both were bred to our sire, RFI Real Deal.



Ray and Suzanne Hill, Southwestern Farms purchased a Full House daughter also bred to RFI Real Deal.

*Diamond RF Farms*

BREEDING QUALITY SIMBRAH CATTLE

Richard and Betsy Foster II and Richard III  
P.O. Box 88 • Floresville, Texas 78114

713/412-4480 Or 713/412-4487 (Richard III) • diamond rf@peoplepc.com

## YARDLEY LAD A332



**3/4 Simmental x 1/4 Angus Bull.**  
**From the proven Yardley program.**

**BULLS FOR SALE AND  
SEMEN ON SELECT BULLS**



Ronnie & Susan Smith  
7736 FM 428  
Denton, Texas 76208  
817-874-3431, cell  
smithfarmstx@gmail.com

## She Could Be The Definition Of Quality

We were impressed with Smith JCC Richer Look 3B from the time she hit the ground and as she matured, she just kept getting better. We elected to sell her in partnership with Smith Genetics at the recent Simbrah Synergy. Our evaluation of her was confirmed as she generated lots of interest, positive comments and bidding at the sale. Her overall quality was complimented over and over!

Richer Look was the high selling female in the sale at \$32,500 as the Fosters of Diamond RF Farms chose to add her to their program. We want to say thank you to them and to everyone who expressed an interest in this lot.

We are flushing Richer Look's dam, Smith Burch Glorious, as well as Smith Johnson Top Price, Smith Wentz O'Wave, Smith Wentz Imagine and Smith Red Mystic. So keep your eye on our program! Our goal is quality!



**Smith JCC Richer Look 3B. Polled Three-Quarter Blood Female.**  
**Sired by Smith Stout and out of our donor dam, Smith Burch Glorious.**  
**She ranks in the top 15% of the breed for API and 15% for TI!**  
**Now owned by Diamond RF Farms.**  
**2015 National Percentage Reserve Heifer Calf.**

## JOHNSON CATTLE CO.

Wayne Johnson 830/391-2571 • Kenny Johnson 361/438-3413  
wjohson4945@sbcglobal.net  
Tim Smith consultant • 512/587-7896 • smithgenetics1@gmail.com  
Follow us on Facebook-Johnson Cattle Company, Kenedy, Texas



# We're Inspired About Our Breeding Program



**McCrory Smith Inspired**

We were excited about this bull early on and his calves have given us every reason to be ecstatic! In fact, we think his calves have given credence to his name, McCrory Smith Inspired.

Inspired is a three-quarter x one-quarter son of Matt N Black and out of a Smith Cowboy bred dam. He ranks in the top 2% of the breed for API and top 10% of the breed for TI, plus he ranks in the top 3% for calving ease and 10% for birth. We and Smith Genetics are utilizing his service heavily in our current ET matings.

We sold a number of his young daughters at Synergy and they averaged right at \$3,000.

We are inspired about his impact on our program and are anticipating great things going forward!

Thank you to our buyers at Synergy Baring Cattle Co., Reese Gonzalez, Reavis Farms, Smith Genetics, 7N Ranch, Southwestern Farms, Kathy Hutto, Circle F Farms, Jacob Friedrich, and Chris Baker.



**An Inspired Daughter**



**An Inspired Daughter**

**McCrory Farms**  
SIMMENTAL & SIMBRAH CATTLE

Mark and Martha McCrory  
903/667-5135 • 903/278-6819  
mamamc4@aol.com

307 North Runnels • DeKalb, Texas 75559  
*We accept calf scramble certificates.*



# the Elite

CATTLE SOLD BY CONSIGNORS ARE ELIGIBLE

TO SHOW FOR OVER \$25,000

IN CASH AND PRIZES

## VOL. III

ONLINE SALE OPENS MAY 6, 2015

CLOSES MAY 9TH, 2015

THE ELITE SHOW FOLLOWS ON MAY 9TH AFTER THE SALE



THE ELITE CHAMPION BANNERS

MANY IN THIS YEAR'S SALE WILL FIND THEIR WAY TO THE BACKDROP

[WWW.THEELITESALE.COM](http://WWW.THEELITESALE.COM)

CONTACT HAGAN CATTLE CO.

REFS: 361-293-4721 • REFSHAGAN@AOL.COM



# Simbrah National Champions Selected

Simbrah breeders showed up in force for the 2015 National Simbrah and Simbrah Percentage Show, held February 16th in conjunction with the San Antonio Livestock Show and Rodeo. Cody Sankey made the decisions on the 166 head of cattle that were exhibited. He commented frequently on the depth of



2015 National Grand Champion Female-Smith RFI Sweet Deb.



2015 National Grand Champion Bull-KSSR Powerman.



2015 National Reserve Grand Champion Female-Hagan Tiana 02B.



2015 National Reserve Grand Champion Bull-Smith SWFS Divas Nu Mark.



quality in the classes and the strengths the breed offered the industry.

Sankey went to the calf division winners for his overall grand and reserve grand females. Smith RFI Sweet Deb, the January class winner, was named grand and calf champion. She is sired by Smith Nu Approach and out of RFI Debutante. She is owned by Smith Genetics, Giddings, Texas and Reavis Farms, Mission, Texas. Miranda Skaggs, Bryan, Texas received the nod for the reserve grand female title. Her heifer, Hagan Tiana 02B, is a daughter of Hagan American Chopper and Hagan Khloe. She was the reserve heifer calf champion.

The grand champion bull belonged to Patti Barnett, Houston, Texas. KSSR Powerman was the bull calf champion on his way to the grand title. He is sired by RSUN Cowboy Casanova and out of the Knezek bred female, Glamour. The reserve grand bull went to the intermediate champion, Smith SWFS Divas Nu Mark, a Smith Satisfies x Smith Wentz Diamond Diva. He is owned by Smith Genetics and Southwestern Farms, Kirbyville, Texas.

The intermediate champion female honors went to KSSR Crown Royal, a Johnnie Walker daughter exhibited by Waylon Hinze, Burton, Texas. The reserve intermediate champion was Hagan Cupcake 92A who stood second in class to the Hinze entry. Cupcake is a Hagan American Chopper daughter, owned by Gage Spence, Pleasanton, Texas. The junior champion female title went home with Carlye Rodenbeck, Brenham, Texas with Smith CRC Breathtaker, a Satisfies daughter, while Sophie Palmore, Kirbyville, Texas won the reserve junior title with RFI Top Duchess, a Sargeant daughter. Palmore also saw her heifer, Smith Mi Bella Cara, a Smith Satisfies daughter win the senior division, while Mia Barba, Rosharon, Texas won the reserve senior division title with LMC MM Red Velvet 1022, a LMC Rhino 5W/367 daughter.

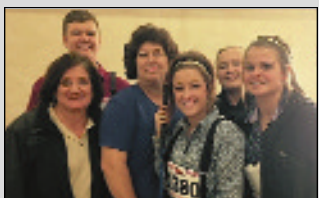
The reserve bull calf title from the National Show was awarded to Smith TMP Red Jewel, a RFI Real Deal son owned by Smith Genetics and Temperance Livestock, Cypress, Texas. The reserve intermediate champion bull was LMC Dos Equis, a LMC 6G Red Rock son, owned by La Muneca Cattle Co., Linn, Texas and Kendall Girault, McAllen, Texas. Junior champion bull was BETM MTSpaniard 5A/15, a 6G/LMC Rajin Cajun son, owned by Marcos Flores, Edinburg, Texas. The reserve junior bull was Mr. LB Tornado 5A/165 owned by Mi Pedisto Ranch and LB Ranch, Mission, Texas. There were no senior division bulls.

Other class winners in the female show included: RFI Miss Right On, a NF Smith Sargeant daughter owned by Reavis Farms; LMC LF Knockout 5B/114, a 6G/LMC Ragin Cagun daughter owned by Webb Fields, Mt. Pleasant, Texas; TK/FCC Tic Tac, a WAR V8 Bubba J974 daughter owned by Dulce Fields, Mt. Pleasant, Texas; Walter's Sue Ellen, a LMC Johnnie Walker daughter owned by Ryleigh Whitaker, Ranger, Texas; J7N Anjelita A39, a LMC HS Rocco 5T/201 daughter, owned by Madison Mello, Natalia, Texas and

## At The National Show...



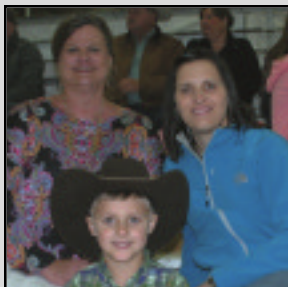
Past junior Simbrah exhibitors, Charley Martinez and Vanessa Hinojosa became engaged during the 2015 National Show.



Rhonda Derouen, Sam Neuman, Janet Vayon, Hannah Derouen, Charlotte Williams and Brennan Seal.



Lincoln Lecompte, Carlos Guerra and Josh Harris.



Susan, Kristin and Lane Hagan.



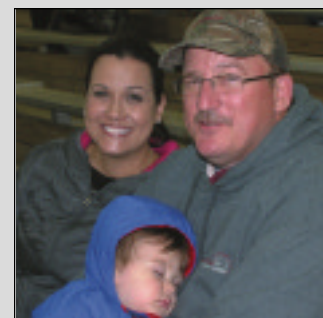
Roy and Trey Baring.



McClaine Pawlek and Payton Meuth.



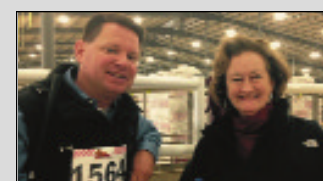
The Hallaks.



Thuy and David Grimes, with their grandson.



David Onstot and Kevin Kent.



Wayne Reavis and Kellie Rodenbeck.



JLF Bit O Honey A314, a JLF/SPR Lucky Hand X013 daughter, owned by Megan Rogers, Lockhart, Texas.

Other class winners in the bull show included: LMC LN Romeo, a RSUN Cowboy Casanova son, owned by John Paul Rodriguez, Edinburg, Texas; JLF Hot Hand, a JLF/SPR Lucky Hand X013, owned by Freasier Ranch, Floresville, Texas; J7N Gentleman Jack, a LMC HS Rocco 5T/201, owned by Freasier Ranch; RND Cash A02, sired by Hagans Terminator 52U, owned by RND Cattle, Weslaco, Texas.

Get-of-sire honors were won by Smith Genetics on the progeny of Smith Satisfies. Smith Genetics also won the best three head honor, while La Muneca won the produce-of-dam honor with progeny of BBS Jennie Walker.

## Percentage Show

In the National Simbrah Percentage Show genetics from Hagan Cattle Co., Yoakum, Texas took the grand bull and female banners. Hagan Eminence 647B, a Hagan Smith Hazard 51X daughter, owned by Payton Meuth, Floresville, Texas was named calf and grand female. Hagan Hashtag 550B, a FBFS Wheel Man 649W son was named calf and grand champion bull for Hagan Cattle.

The reserve grand female in the percentage show was Smith Shimmer N Black, a Smith William N Black bred female. She is owned by Sophie Palmore and was the junior champion. The reserve grand percentage bull was LHH 050 Negro, a LMC Liberty 5Y/117, who is owned by La Hacienda Hinojosa, Edinburg, Texas.

Other division champions in the percentage show included the reserve heifer calf champion Smith JCC Richer Look 3B, a Smith Stout N Black, owned by Diamond RF Farms, Floresville, Texas. Reserve junior heifer was Hagan Showtime 5A, owned by Payton Meuth, She was sired by FBFS Wheel Man.



**2015 National Grand Champion Percentage Female-Hagan Eminence 647B.**



**2015 National Grand Champion Percentage Bull-Hagan Hashtag 550B.**





2015 National Reserve Bull Calf Champion-Smith TMP Red Jewel.



2015 National Intermediate Champion Female-KSSR Crown Royal.



2015 National Intermediate Champion Bull-LMC Dos Equis.



2015 National Reserve Intermediate Champion Female-Hagan Cupcake 92A.



2015 National Junior Champion Female-Smith CRC Breather.



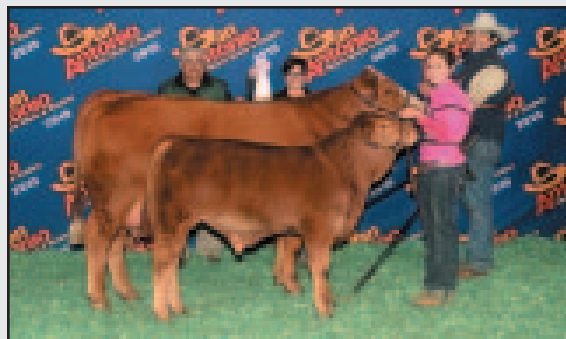
2015 National Reserve Junior Champion Female-RFI Top Duchess.







2015 Junior Champion Bull-BETM MT Spaniard 5A/15.



2015 National Reserve Senior Champion Female-LMC MM Red Velvet 1022.



2015 Reserve Junior Bull Champion-MR LB Tornado 5A/165.



2015 National Senior Champion Female-Smith Mi Bella Cara.



2015 National Reserve Grand Champion Percentage Female-Smith Shimmer N Black.



2015 National Reserve Grand Champion Percentage Bull-LHH 050 Negro.





# A Program That Produces Winners

## Show after show, year after year!



Miranda Skaggs exhibited **Hagan Ginger** to many major championships, including the 2014 State Fair of Texas Open Grand Champion Simbrah Female honor. She is a Johnnie Walker Black daughter out of our great donor, 50.



Regan Merryfield took **Hagan Fancy GA** to the backdrop at the 2015 Fort Worth Junior Show for the Grand Champion Simbrah Female honor. Fancy is by Hagan Scout, and out of Hagan Divine!



Miranda Skaggs saw her heifer, **Hagan Tiana**, a Hagan American Chopper x Hagan Kline daughter win the Reserve Calf and Reserve Grand honor at the 2015 National Simbrah Show.



Payton Mouth and **Hagan Eminence** won the Grand Champion Percentage Simbrah Female banner at the 2015 National Percentage Simbrah Show.



Our bull, **Hagan HashTag 5508**, a 1B15 Wheel Man 619W and out of our donor, 500, a daughter of Johnnie Walker and our 50, was named the Grand Champion Bull at the 2015 National Percentage Simbrah Show.

For cattle that can take  
you to the winner's  
circle—come see us  
and be sure to check out  
the *Elite*

Online Sale  
May 6-9th  
Live closeout of  
auction May 9th.

For all the details, visit  
[www.theelitesale.com](http://www.theelitesale.com)



**Kim Hagan Family**

1364 FM 2543 • Yoakum, TX 77995

Kim: (361) 293-4720 • Reese: (361) 293-4721

[www.hagancattle.com](http://www.hagancattle.com)

[reesehagan@aol.com](mailto:reesehagan@aol.com)



# It Was A Great Day For The Simbrah Breed!

Simbrah Synergy VII proved the demand for the Simbrah breed as 140 lots grossed \$885,400 to average \$6,324 and juniors competed for \$15,000 in prize monies! Buyers competed enthusiastically to own the cattle that represented top programs in the breed. We want to thank all the bidders, buyers, junior exhibitors and their families and everyone that attended the sale! You made it a great day for the Synergy participants and the Simbrah breed!



**Mark your 2015 Calendars  
Simbrah Synergy VIII  
October 23-25  
Smith Genetics, Giddings, Texas**

**Sale Participants**

**7N Ranch, Baring Cattle Co., Burch Farms,  
Diamond RF Farms, Hagan Cattle Co.,  
Hallak Ranch, McCrary Farms, Pine Ridge  
Ranch, Reavis Farms, Smith Farms, Smith  
Genetics, Southwestern Farms, Triple J  
Ranch, and Triple P Ranch**





# FIREBALL



## *Smith McCrary Fireball 710A*



**Tim Smith, Joel Isgrig, & Haley Smith**  
P.O. Box 330 • Giddings, Texas 78942  
512/587-7896 • [smithgenetics1@gmail.com](mailto:smithgenetics1@gmail.com)  
[www.smithgenetics.com](http://www.smithgenetics.com)

### *Additional Owners of Fireball:*

**McCrary Farms** • 903/278-6819  
**Reavls Farms** • 956/585-6831  
**7N Ranch** • 956/460-6002  
**Johnson Cattle Co.** • 830/391-2571  
**Monte Christo Cattle Co.** • 956/207-2087  
**Southwestern Farms** • 409/423-9060

- Genomic enhanced EPDs rank him in the top 5% of the breed for API and top 10% for TI.
- Homozygous polled.
- Genetically tested non-dilutor.
- Sired by Smith Satisfies and out of McCrary Hi Price, a Dream On daughter out of the great Smith Priceless.
- We are excited about what he brings to the breed—power both phenotypically and genotypical.



# REPORTS



## Simbrah Synergy VII Sale sees strong demand

Giddings, Texas saw a standing room only crowd for the Simbrah Synergy VII Sale, October 25th at Smith Genetics, Giddings, Texas. Participants in Synergy include the programs of 7N Ranch, Baring Cattle Co., Burch Farms, Diamond RF Farms, Hagan Cattle, Hallak Ranch, McCrary Farms, Pine Ridge Ranch, Reavis Farms, Smith Farms, Southwestern Farms, Triple J Ranch, Triple P Ranch and Smith Genetics.

The offering, which included many show prospects, saw 140 lots gross \$885,400 to average \$6,324. The sale was predominately purebred Simbrah lots, but also included percentage Simbrahs and some Simmental cattle.

Active bidding on all lots described the sale action throughout the night. Diamond RF Farms, Floresville, Texas outlasted the



Pete Nieschwietz and his mother, Marilyn of 7N Ranch, were volume buyers at the Synergy Sale. They are pictured with Tim Smith (r), sale host.



Jud and Marjorie Flowers, Monte Christo Ranch, Mission, Texas made several purchases at the Simbrah Synergy VII Sale.



Jim and Joann Stacey (l) join sale host, Tim Smith, (c) and the Foster family from Diamond RF Farms for a photo after the sale. The Stacey's are new breeders and teamed with the Fosters in a purchase. The Foster family also purchased the high selling lot in the sale.

bidding to purchase Smith JCC Richer Look 3B, a percentage Simbrah from the Smith Genetics/Johnson Cattle Co partnership for \$32,500. The young female was sired by Smith Stout N Black and was out of a member of the Smith Glorious Cow Family. Diamond RF also partnered with new breeders, Jim and Joann Stacey, Houston, Texas to purchase Smith Madam B for \$25,000. The purebred female was sired by Smith Satisfies and was out of Smith Madam, a Dream On daughter from the Madam Cow Family. She was offered by Smith Genetics.

7N Ranch purchased 10 units of semen from Smith Nu Wave II for \$2,100 each. The lot was offered by Reavis Farms and Smith Genetics. Nu Wave progeny have dominated the breed over the past few years and his genetics are in high demand as evidenced by this final bid.

The lead off lot offered by Southwestern Farms and Smith Genetics was purchased by 7N Ranch for \$25,000. The purebred female had many admirers and bidders on sale day. She was sired by Smith Satisfies and out of the LMC Miss Diva cow, plus she sold bred to RFI Real Deal, the 2014 ASA National and National at San Antonio Grand Champion Simbrah Bull.

A number of junior breeders purchased top show prospects at the sale and will be campaigning them in the coming show season. The sale was auctioneered by Col. Terry Reagan.

Volume purchases were made by 7N Ranch, Monte Christo Ranch and Southwestern Farms.

## Juniors compete for honors at Simbrah Synergy Showcase

As part of the annual Simbrah Synergy event, juniors competed in showmanship, heifer shows, and educational contests. The cattle were judged by Missouri



Our educational winners were Logan Perry, who won the junior division skill-a-thon and sales talk: Payton Meuth who won the senior sales talk; Cary Perry who was the senior division skill-a-thon winner. Reserve junior sales talk went to Tyler Denny and reserve senior sales talk went to Chris Beaty. Coy Westbrook was the reserve senior division skill-a-thon winner, while Bradley Meuth took the reserve junior sales talk honor. Pictured (l to r) Beaty, Bradley Meuth, Westbrook, Denny, Payton Meuth, Clyde Perry and Cary Perry.



Simbrah Synergy Grand Champion Purebred honors went to Payton Meuth with a Hagan heifer. She won the \$3,000, banner and buckle.



Sidney Paul won the reserve purebred title, a banner and \$1,500 with a Smith Genetics heifer.



The Grand Champion Percentage Simbrah Heifer honor went to Payton Meuth with a Wheelman heifer from Hagan. She won a banner, buckle and \$600.



Sophie Palmore won the reserve percentage title with a Matt N Black heifer from Smith Genetics. She won a buckle, banner and \$400.



The Grand Champion Simmental honor went to Sophie Palmore with a Smith Genetics heifer sired by William N Black. She won a buckle, banner and \$600.



The Reserve Simmental honor went to Zachary Willey with a Smith Genetics heifer sired by Stout N Black. He won \$400, a buckle and banner.



Simmental breeder, Scott Cowger and showmanship was judged by Robert Cromwell.

Junior exhibitors also competed in five divisions of showmanship for belt buckles and \$7,500 of the total \$15,000 awarded in the event. Each division paid ten places and first and second place received buckles. In addition, they vied for top honors and prizes in sales talk and skill-a-thon as Southwestern Farms sponsored the educational portion.

The grand champion Simmental female was exhibited by Sophie Palmore and was sired by Smith William N Black, while Zachary Willey exhibited a Smith Stout N Black daughter to the reserve title. Both heifers were sponsored by Smith Genetics. They were awarded banners and \$600 and \$400 respectively.

In the percentage show, Payton Meuth took her Hagan sponsored heifer, sired by FBFS Wheelman to the champion honors, while Palmore exhibited the reserve champion percentage female, a Smith Matt N Black heifer, sponsored by Smith Genetics. Both of these heifers came from the oldest division. Brody Hill purchased a heifer in the sale the night before from Hallak Ranch and the Mr. Strack Y254 daughter won the percentage calf honor. Palmore also exhibited the junior champion female, who was sired by Matt N Black and sponsored by Smith Genetics. The champion and reserve champion received banners and \$600 and \$400.

Meuth returned to the backdrop to win the grand champion purebred title, a banner and \$3,000. Her heifer, sponsored by Hagan won the senior division and was sired by Hagan Shamoo. The reserve grand purebred female was exhibited by Sydney Paul and she received a banner and \$1,500. Her Smith Genetics sponsored heifer was the reserve senior champion and sired by Smith Satisfies.

Winston Walters won the calf division with a Smith Satisfies daughter and Cary Perry exhibited a Smith Highly Recommended

(Continued on page 36)

## If it's quality you want... we've got it!

When you want  
quality Simgenetics,  
then we invite you to  
consider ours.

We are producing  
Simbrah, Percentage  
Simbrah and  
Simmental genetics.



A three-quarter blood heifer sired by our sire, Mr Strack Y254. Night Star is a half sister to the heifer we sold Brody Hill at Synergy and who went on to be the calf champion at the Synergy Percentage Show.

**We have several showheifers for sale!**

Also thank you to our buyers at Synergy, the Pops of Triple P, the Hill family of Brolaco Cattle Co, 7N Ranch and Southwestern Farms.

MEMBERS OF SIMBRAH SYNERGY AND SIMMENTAL-SIMBRAH SUPERBOWL

### NH HALLAK RANCH

Billy Hallak • 1167 Oval Drive • Athens, Texas 75751  
903/203-8524 • Nhalla@hotmail.com • www.hallakranch.com

## YOUR SOURCE FOR ELITE GENETICS



Congratulations to Josh Evans on your success with LMC ATZ FRESA. We have exciting calves on the ground sired by LMC ATZ Dr. Feel Good who is a full brother to Fresca's dam, LMC ATZ Miley.



We appreciate our good friend Louie Flores investing in LMC BETM BRIANN, an LMC Arcadio daughter. We have season packages for sale on the 2011 National Champion Bull, LMC Arcadio.

**A BIG HEARTY THANKS TO OUR  
ALAMO CITY SIMBRAH SALE BUYERS!**

**BE LOOKING FOR OUR  
CONSIGNMENTS TO LMC GENEPLUS  
ONLINE SALES IN 2015!**

**BEST OF LUCK TO THE BETM RANCH  
SHOW TEAM THIS SHOW SEASON!**



Dr. Ernesto Guerra Family  
betmguerra@yahoo.com

Ranch Manager  
Ted Tschirhart  
210- 827- 7949

Sales Consultant  
Victor Guerra • 956- 607- 5515  
vgg03@aol.com



We want to thank all of the buyers of our 2014 LMC WFC Ms. Dream Girl calves. Pictured is Tucker Tanner with LMC MS. EVE, a gorgeous LMC Rhino daughter. More Dream Girls coming soon!



We're excited to introduce BETM LMC RAFA, a LMC Arcadio son out of our LMC Sweet Dreams donor. Rafa is a LMC WFC Ms. Dream Girl grandson. Co-owned with La Manteca.

## BE ON THE LOOKOUT FOR BETM CATTLE AT





# Strengthen Your Program With

At Pine Ridge Ranch, we have been developing and fine tuning our program for almost 40 years and we feel that we can offer you real breeding power. We invite you to capitalize on our efforts and the individuals in our program, as we have semen on about 50 bulls in our program for sale.



**PRR Parlay 118A**  
**ASA #2771160**

*Semen is \$35/unit on all bulls. We do offer a volume discount — buy 100 units at one time from any of our bulls for \$30/unit. Embryos sired by these and our other bulls also for sale.*



**PRR Pilgrim 008X**  
**ASA #2586450**

We have the research that proves that by using our bulls for three generations, you can achieve a 87.5% consistency rate on efficiency and carcass traits.

*Please call to schedule a visit to the ranch to view our unique breeding program.*



**PRR Powerfull 22Z**  
**ASA #2658365**



**PINE RIDGE RANCH, LLC**

Bill and Jane Travis • 214/850-6308 • [billtravis@bigplanet.com](mailto:billtravis@bigplanet.com)

Ranch located in Athens, Texas



# The Genetics Of Our Program.



PRR Preview 973Z • ASA #2676077



PRR Prevail 774S • ASA #2341008



PRR Palisade 813T • ASA #2439924



PRR Rito 545W • ASA #2513491



PRR Choice 565W • ASA #2513493



PRR Topline 327X • ASA #2590951

For additional information and data on our program

[www.simbrah.com](http://www.simbrah.com)

TX



# Designing a “Bud Box”

**Ron Gill, Ph.D., Rick Machen, Ph.D.,  
Professor and Extension  
Livestock Specialists**

There is nothing magical or mystical about a Bud Box. It is a facility design that allows the handler to position themselves correctly to facilitate cattle flow out of the box into either the crowd alley leading to a chute or to a trailer load out. Always keep in mind that the Box is a flow-through part of the facility. Cattle should never be stored in the Box waiting to be sent into the crowd alley or to a

trailer. Bring them in and let them flow back out immediately.

Dimensions are important to successful use of a Box, but not as critical as handler position in relation to the stock leaving the Box. Without proper position and attention to detail, a Box will only confuse the stock and frustrate the handler.

The Box should be large enough to accommodate a volume of cattle to fill the crowd alley or fill a trailer compartment. A crowd alley to a squeeze chute should hold a minimum of four cows and might need to hold 20 head depending on the speed of processing. Crowd alleys on cow-calf operations will typically hold five to six cows. Facilities working calves or yearlings routinely need crowd alleys for 12 to 20 head of cattle.

Remember, the crowd alley will normally not be empty when additional cattle are brought through the Box. To

maintain flow it will be necessary to add additional cattle while one or two stand in the crowd alley awaiting processing. Consequently the length of the crowd alley is important. Ideally the crowd alley would be long enough to hold an adequate number of cattle for processing while more cattle are brought through the Box, without disrupting flow. A short crowd alley may result in frequent interruptions of cattle flow and processing.

For some reason the industry has migrated toward the crowd alley starting to curve at the entrance from the tub or Box. The exit from a tub or a Box and entrance into the crowd alley should be straight for at least two mature cow body lengths. This allows flow to become established without the appearance of entering a dead end crowd alley. Keep it straight for at least 12 feet and then start a curve if warranted (ex. space is limited). Otherwise a long straight crowd alley works very well for processing cattle.

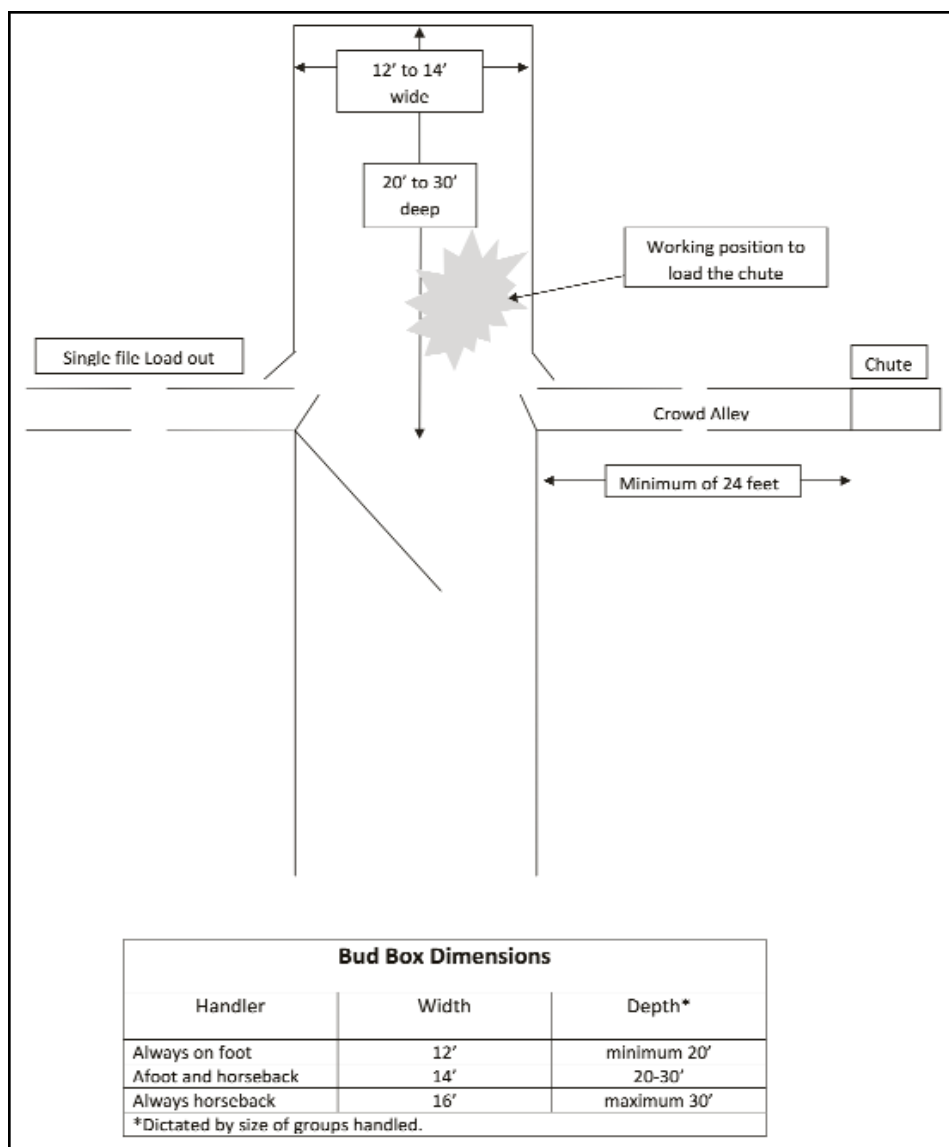
Most cow-calf operations will need a Box that is at least 12 feet wide and 20 feet deep. It can be 14 feet wide and should be if the handler will be horseback. Depending on the size of the cattle being worked it could be 16 feet wide if the handler in the Box will always be horseback. Both the 14 and 16 foot widths are too wide for comfortably working most stock on foot.

A Box can certainly be wider than an alley leading up to it. In fact, going from a 10 or 12 foot alleyway into a 14 foot wide Box will normally allow the cattle entering the Box to do so faster setting up the transition even better. Do not let the width of an alley dictate the width of the Box.

The length/depth needed is determined by the size of the group handled. Again, group size is dictated by the capacity of the crowd alley or trailer compartment being loaded. The Box needs to be deep enough to allow the cattle to flow to the back of the Box, let the handler close the gate and get in position before the cattle transition out of the back of the Box. Just like a tub system never overfill the Box. Success depends on the flow into, transition, and flow out of the Box.

For most crowd alleys a 20 to 24 foot Box is adequate depth. Any deeper

(Continued on page 36)





**DOUG SCHULTZ**  
337.540.8901

**LAZY SF RANCH**

**CRAIG SCHULTZ**  
337.802.2173

**SIMBRAH**

**FLECKVIEH**

**SIMMENTAL**



**SIMANGUS HT**

**COMMERCIAL**



**RONALD FRUGE**  
337.354.7261

**VF CATTLE**  
**MUDDY WATER**  
**CATTLE CO.**

**BRANDI FRUGE**  
337.513.1761

# 3 Strong Reasons To Consider Boening Brothers Simbrah

## **BOENING BROS.**

Russell and Scott Boening  
and families  
2438 CR 137

Floresville, Texas 78114

830/393-2397 • 830/391-3173 cell

boebros@aol.com

## **We have calves on the ground by Rhino and Net Profit and Manziel calves will be coming!**

Our emphasis is on sound, functional, high performing, low maintenance and easy fleshing cattle. These bulls are delivering calves that fit that criteria and also have the eye appeal and styling profiles to match.

We invite you to come see our program and particularly the calves by Rhino and Net Profit.

### ★ **LMC Rhino**

LMC Rhino-Owned with La Muneca. 2012 International Champion. Sired by LMC Full House and out of LMC Sambo's Muneca. He's an eighth Fleckvieh too!



### ★ **LMC Net Profit**

6GLMC Net Profit 3X14-A three quarter blood son of JF Net Investment and out of the Power House daughter, Blueberry.



### ★ **LMC BBS Manziel**

LMC BBS Manziel 5B/2-Sired by 6G/LMC Rajin Cajun W908 and out of our donor BBS Jennie Walker, a Johnnie Walker daughter. He's just a January 2014 calf and we're anticipating great things from him!





# NO LIMITS at Monte Christo

WE FEEL THERE ARE NO LIMITS TO THE QUALITY THAT'S IN THE FUTURE OF OUR SIMBRAH PROGRAM. WE'VE SOUGHT OUT GENETICS THAT CAN PROVIDE POWER, PREDICTABILITY, STRONG EPD NUMBERS AND PROFITABILITY!

WE WILL BE SELLING SELECT INDIVIDUALS IN THE UPCOMING MAS X ONLINE SALE, APRIL 19-21 AND SIMBRAH SYNERGY IN OCTOBER! OFFERINGS WILL INCLUDE CALVES BY RFI SMITH THUNDERSTRUCK AND LMC SUAVE.



*SMITH ISGRIG AVA*

WE HAVE EMBRYOS COMING FROM THIS MATRON AND SMITH SATISFIES. AVA IS A DAUGHTER OF SMITH NU WAVE II AND SMITH ISGRIG ELEANOR. THIS COW FAMILY ALSO HAS SMITH ISGRIG CHARISMATIC, SMITH ELEANOR SWAGGER AND SMITH ISGRIG JOELLIE IN IT. THESE COMING CALVES WILL RANK IN THE TOP 10% OF THE BREED FOR API AND TI.



*SMITH MCCRARY FIREBALL*

WE HAVE PURCHASED A SHARE IN THIS SON OF SATISFIES AND OUT OF MCCRARY HI PRICE. A DREAM ON X SMITH PRICELESS DAUGHTER. WE WILL BE BREEDING HIM STRONGLY TO A SET OF HEIFERS WE HAD THE FIRST PICK FROM AT PINE RIDGE RANCH.



*RFI SMITH THUNDERSTRUCK*

A THREE QUARTER DREAM ON SON, OUT OF POSSIBLY THE MOST PROVEN AND VALUABLE COW OF THE BREED. SMITH PRICELESS. HE RANKS IN THE TOP 1% OF THE BREED FOR API AND TOP 10% FOR TI. WE HAVE A SET OF FALL CALVES COMING FROM HIM.



*RFI RED RANGER*

A THREE-QUARTER SON OF EVAN AND OUT OF A WHEATLAND BRED SIMMENTAL COW. WE WILL HAVE CALVES ON THE GROUND THIS FALL FROM THIS BULL, WHO HAS A TOP 1% RANKING FOR API AND TOP 10% FOR TI. 2014 NATIONAL PERCENTAGE GRAND CHAMPION BULL.

## MONTA CHRISTO CATTLE CO.

JUD & MARGIE FLOWERS  
16031 N. MONTE CHRISTO RANCH RD.  
EDINBURG, TEXAS 78541 • 956/207-2087  
JUDF@LONESTARCITRUS.COM



# RIO GRANDE VALLEY

## THE BIRTHPLACE AND CAPITAL OF SIMBRAH

The good Lord has blessed the RGV with some bountiful rains here recently and the pastures and cattle are bouncing back from the prolonged drought. Although the drought has taken its toll on the region, the RGV remains the source for the most Simbrah cattle in the USA within one hour of each other. So if you are in the market for a show heifer, a commercial or herd bull, come see us here in the RGV. If we don't have it, we can sure help you find it and have a good time doing so. Many of Simbrah's leaders are from the RGV – from the late Bud Wentz helping start the breed in the late 60's to La Muñeca starting their annual Jr. Educational Round ups in the late 80's to the first Simbrah steer show in the early 90's and MAS in the early 2000's, you can count on RGV breeders to **MAKE THINGS HAPPEN** for Simbrah.



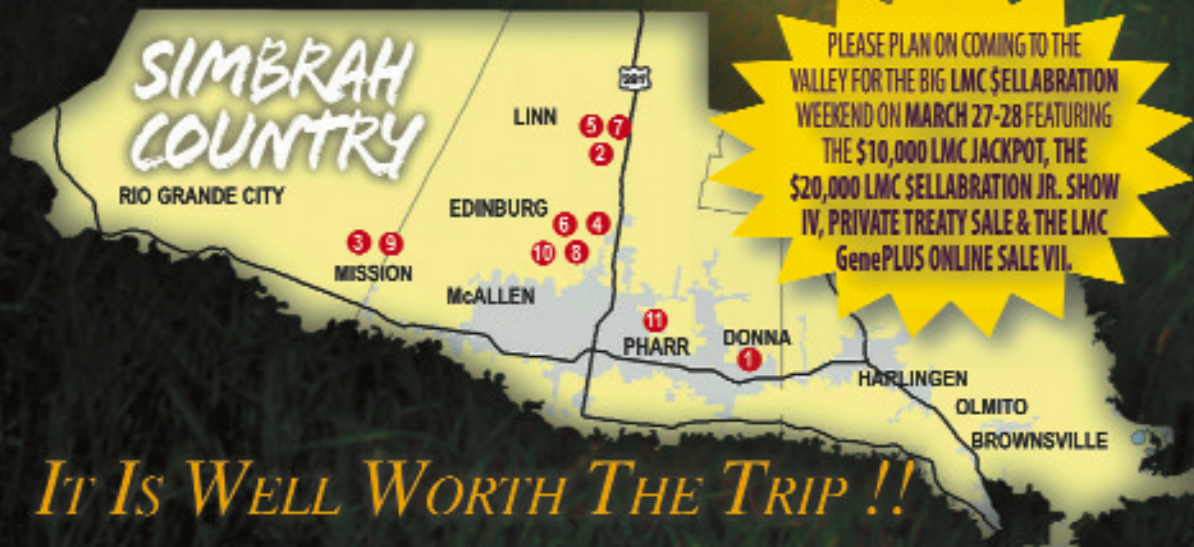
One of two full sisters sired by LMC GG Red Rock and RGV LMC Dr. Beauty being shown by Olivia and Ava Vela. **THANKS** to Josh Harris & Lincoln Lecompte for buying the International Champion Red Rock.



**La Hacienda Cattle** had the 2014 RGV Open Champion sired by LMC JWB Amigo 5U286 x A&A Butterfly with a heifer calf sired by KSSR DOMINATOR. Come see us !!



**LMC Perfect Dream** is a LMC Arcadio x LMC WFC Dream Girl that is going to be a donor for the Dream Girl Team. She is the product of two National Champions and **NEARS PERFECTION IN THE FLESH.**



PLEASE PLAN ON COMING TO THE VALLEY FOR THE BIG LMC \$ELLABRATION WEEKEND ON MARCH 27-28 FEATURING THE \$10,000 LMC JACKPOT, THE \$20,000 LMC \$ELLABRATION JR. SHOW IV, PRIVATE TREATY SALE & THE LMC GenePLUS ONLINE SALE VII.



**LMC Red Buck** is the new herd sire for Top C Cattle Co. He was sired by Lucas Red Cloud and a top Wayne Yaeger cow. Red Buck will soon have babies at Top C. Come visit all of us RGV breeders ASAP.



**Brolaco Cattle Co.** is proud of their new Simbravieh herd sire **BLCO Gold Nugget** sired by the 2013 National Champion Simbrah LMC Gold Medal. Look for their cattle at SA and RGV Shows.



**LN Bristol B164** is a September show heifer prospect sired by LMC LN 12th Man out of a Dr. Feel Good X LN Nidorina. She will be one of La Negra's consignments to the **LMC GenePLUS Sale VII** on March 28-31.

- 1 **7N Ranch** - Donna  
Neeschwiets Family  
956/160-6002  
janneeschwiets@starglobal.net
- 2 **Brolaco Cattle Co.** - Linn  
Benjamin & Tonya Hill Family  
956/1227 - 8239  
tonyahill@yahoo.com
- 3 **La Blanquita Ranch** - Mission  
Ruben Garcia & Sons  
956/624 1428  
branch6@yahoo.com
- 4 **La Hacienda Hinojosa** - Edinburg  
The Lucas Hinojosa Family  
956/581-8903  
LHH-Ranch1954@aol.com
- 5 **La Muñeca Cattle Co.** - Linn  
Carlos X Guerra Family  
956/583-7588 (M) 802-1841  
www.lamuñecacattle.com
- 6 **La Negra Cattle Co.** - Edinburg  
Javier Moreno Family  
956/607-7108  
javiermcc@aol.com
- 7 **LPJ Ranch** - Linn  
Luis Flores Jr. Family  
956/567-0205  
Louie@luchorzosanmanuel.com
- 8 **Monte Christo Ranch** - Edinburg  
Jud and Margie Flowers  
956/207-2087  
judi@linnestadlinus.com
- 9 **Reavis Farms, Inc.** - Mission  
Randy Reavis Family  
956/595-0831  
www.reavisfarms.com
- 10 **RGV Cattle Company** - Edinburg  
Rene Vela Family  
956/779-7700  
Rgvrmn@aol.com
- 11 **Top C Cattle Co.** - Pharr  
Benny Cano Family  
956/499-5729  
bcanupj@gnx.com



## A Jewel Of A Cow Family

We fell in love with RFI Smith Hidden Jewel as a baby, when we purchased her for Kaleb to campaign his senior year. She is a member of the Smith Pure Diamond-Pure Jewel Cow Family and she is continuing the winning tradition in both the pasture and show ring. Her show winnings include the 2014 ASA National Grand Champion, 2014 Fort Worth Grand Champion, 2014 AJSA National Cow/Calf Pair and several other show championships.

She is in our donor lineup and her first calf, Smith TMP Red Jewel—exceeded our expectations. This April calf, sired by RFI Real Deal has all the volume, muscle and substance a program could need. Red Jewel is owned with Smith Genetics. His EPDs rank him in the top 15% of the breed for weaning weight and top 25% for TI. He was the 2015 National Res. Bull Calf Champion.



Smith RFI Hidden Jewel



Smith TMP Red Jewel

Thanks also to the buyers of our cattle we offered jointly with Smith Genetics: Lisa Naive, Barrett Novak, Justin Higgins, MacKenzie Powell and Monte Christo Ranch.

FALL AND WINTER CALVES FOR SALE



**Temperance**  
Livestock Company

David and Thuy Grimes • Kaleb and Katarina Fontenot  
Cypress, Texas • 832/594-7530  
info@tmplsc.com • www.temperancelivestock.com



## Advancing our program



Smith Barh Enthralled-A three-quarter blood female sired by Smith Andy N Black now in our herd.



RFI Kristin 373A - A purebred Simbrah female sired by Ronen and carrying Smith Also N Red breeding.

We started in the cattle business with select Simmental purchases and we established a strong foundation. Now we are advancing our program with key additions of Simbrah and percentage Simbrah females, as well as producing percentage Simbrah from our Simmental nucleus!

We're excited about the business and also want to thank McCrary Farms and Hayden Hackett for purchasing our lot we offered with Smith Genetics at the recent Simbrah Synergy!

Visit us at [www.btmaiorano](http://www.btmaiorano) and watch us as we advance our program!

*Bob and Tammy Maiorano*

678 Moss Rose Lane • Driftwood, Texas 78619

Tim Smith, consultant 512/587-7896 • [smithgenetics1@gmail.com](mailto:smithgenetics1@gmail.com) •

[www.btmaiorano](http://www.btmaiorano)

## Bulls, Show Steers, Show and Replacement Heifers For Sale

We have Smith Unrivaled and Smith Always In Style leading our program. Unrivaled is a Smith Satisfies x Smith Bella Bella and Always In Style is a three-quarter blood sired by Dream On and out of the great Priceless. We also have cattle working in our program with the genetics of Smith William, Smith Andy N Black, Smith Satisfies, Smith Stout N Black and Smith Fierce.

**IF YOU NEED SIMMENTAL/  
SIMBRAH COME SEE US!**



**Smith  
Unrivaled**  
Photo taken as a calf

*Pebble Creek Farms*

Robert Barth & Family • P.O. Box 589 • Cuero, Texas 77954

361/676-5303 • [robertwbarthdds@yahoo.com](mailto:robertwbarthdds@yahoo.com)





We would like to congratulate *Adriana* on all of her success in school, 4-H, FFA, cheerleading, Queen Citrianna and with her cattle. We are all so proud of you as would be your Grandpa Pelon. We wish you the best of luck with college and with your career. We want to take this opportunity to **THANK** all of the good folks that have supported our children in their 4-H, FFA and school endeavors. May God Continue to Bless All of You !!



## LPJ RANCH

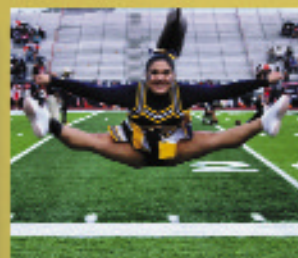
Luis & Vicky Flores Family

Louie 956 457 0205

Patsy 956 821 3947

Jaime 956 457 1088

[Louie@chorizosanmanuel.com](mailto:Louie@chorizosanmanuel.com)



Look for us at  
your local grocer.

CHORIZO DE SAN MANUEL, INC. • 1-800-638-8708





# AJSANational Classic is coming to Texas



By Lesli Garrett

The Brazos Valley Expo center in Bryan/College Station will host the AJSANational Classic in July. Contestants from across the country will experience a Texas fiesta.

Every summer, youth from across the nation gather at the American Junior Simmental Association (AJSA) National Classic. This year, Texas is proud to host the event July 5-12th in Bryan/College Station and it marks the first time since 2008 for the event to be in the Lone Star State.

This event is an opportunity for juniors exhibiting Simmental and Simbrah cattle to compete in purebred cattle shows and six different educational

contests, while meeting fellow cattle enthusiast from across the nation. The Classic draws in exhibitors from a multitude of states and approximately 400 head of cattle each summer

Texas is known for having the largest and most dynamic junior Simmental/Simbrah membership in the country and having the junior nationals in Texas least once a decade is a priori-

ty to the Texas Junior Simmental/Simbrah Association (TJSSA).

"Hosting the junior nationals in Texas is a great way to expose many of our membership to competition on a national level that they may not have otherwise experienced," says Ellen Tom, TJSSA advisor. "Another unique element to Texas hosting is that each time, we attract a large number of Simbrah cattle to the show. This year we are hoping to exhibit 100+ head of Simbrah heifers and expose junior members from farther north to these Brahman influenced cattle and show them the important role they play in the commercial cow/calf sector in the Gulf Coast region of the United States."

Simbrah exhibitors are looking forward to the opportunity to compete on a national level with SimGenetic enthusiasts in their home state.

"The more Simbrah cattle we can put in front of them will help further our message and the popularity of the breed. This is why it is so important to have a huge show when it is so close to home," describes Faith Onstot, TJSSA exhibitor, who has attended the Classic in several other states the past few years.

Hannah Wine, ASA Director of Media, Youth and PTP Programs says, "It



Breeders and exhibitors can expect to see lots of cattle at the AJSA National Classic when it comes to Texas in July.



will be a prime time for Simbrah exhibitors to showcase what their cattle are all about. The 2015 National Classic will be a great opportunity for youth to gather around the Sim component of the cattle we all love and see how we make it work."

Each year the host state plans and organizes an assortment of events to encourage exhibitors and families from different states a chance to interact. Texas will incorporate its state pride with a "fiesta" theme throughout the week.

"It is a much more intimate and family-oriented setting, anchored in familiar activities such as cattle shows and leadership contests. Exhibitors and their families get to meet and befriend other Simmental and Simbrah families from across the nation and bonds are formed that last over the years," remarks Jennifer Kincaid, TJSSA advisor.

This year's National Classic will be the ultimate family vacation featuring social events like a tailgate party, fun run, Texas A&M University campus tours, a dance, tours of Sexing Technologies, and the banquet to cap off the week.

"Attending junior nationals is like attending a family reunion," says Tom.

Texas' own Dulce Fields is currently serving as the AJSA president and she stated, "I believe that the educational skills one can learn going through our junior program is a major benefit to young people. From evaluating cattle in the judging contest to giving a speech in public speaking, the skills you will learn prepare you for your future. The opportunities I have been afforded by being involved in the AJSA and attending the National Classic have shaped me into the person that I am today. I have benefited from my experiences in the contests such as public speaking and sales talk by improving my speaking and presentation skills. I am confident in myself speaking in front of a group of people. I will always cherish the friendships that I have made over the years and want to encourage all youth who show Simgenetics to attend."

Between the cattle shows, leadership contests and social events each year, the AJSA Board of Trustees include a service project with the



A look at the arena where Simmental and Simbrah entries from across the country will compete at the AJSA National Classic.

National Classic. This year the board is excited to announce a "Mad Hatter" drive as this year's national community service project. A variety of hats will be collected for the Hats Off For Cancer organization.

Wine stated that the brand new hats will be distributed to hospitals in Texas and given to children battling cancer,

especially children who lose their hair due to cancer treatments. Donated hats can be anything from a ball cap to a handmade stocking cap, with lots of options in between.

Hats will be collected on Monday, July 6th at the opening ceremonies of the 2015 AJSA National Classic.

(Continued on page 38)



This is what it looked like at last year's National Classic during the cattlemen's quiz.

## TJSSA NEEDS YOUR HELP

The Texas Juniors Simmental/Simbrah Association (TJSSA) is hosting the American Junior Simmental Classic July 5-12, 2015 at the Brazos Expo Center, Bryan-College Station, Texas. The organization is currently accepting donations to offset the cost and are also looking for volunteers. For a complete breakdown of sponsorships and advertising opportunities, visit [www.texassimmental-simbrah.org](http://www.texassimmental-simbrah.org) and view the information under the announcements section on the home page. You may also contact the TJSSA sponsors listed below for additional information.

Betty Freasier • [freasierranch@aol.com](mailto:freasierranch@aol.com), 210-313-0926  
 Jennifer Kincaid • [jennifer@fandwelectrical.com](mailto:jennifer@fandwelectrical.com), 210-269-7136  
 Ellen Tom • [ellenktom@gmail.com](mailto:ellenktom@gmail.com), 210-213-0020  
 Scott Willey • [sawilley@ag.tamu.edu](mailto:sawilley@ag.tamu.edu), 979-966-8728





# MAS X Simbrah Sale and Show

*More Quality -  
Exciting Format*

**Online Sale April 19-21 on  
[www.cattleinmotion.com](http://www.cattleinmotion.com)**

**Show will be in conjunction with  
AJSR in Wharton, Texas**

***SELLING 25 QUALITY LOTS -  
including some fancy show prospects, as  
well as embryos, bred females and pairs.***



Congratulations to the Hill's on raising this great heifer prospect out of a show heifer they purchased in MAS VII. She will be one of their consignments to MAS X.



This first generation purebred Simbrah sired by SS Goldmine will be a consignment from La Negra Cattle Co.



RGVLN Hope has been champion several times and was purchased from RGV and La Negra by Daryl Caraveo and Olivia Vela in MAS IX. More like her will sell!



Hope Onstot was the recipient of the \$3,000 check from MAS Participants in 2014 as she and her La Muneca heifer were named the champions of the purebred show MAS awards \$15,000 in prizes and monies annually at the MAS Showdown. Cattle must be purchased from a MAS sponsor. This year's show will be in June! Buy in sale in April and show in June for the money! Half of the money is awarded in five divisions of showmanship!

## **This year's participants include:**

**5W Cattle Co 956/245-7996  
6G Land and Cattle 361/772-0188  
BETM Ranch 210/827-7949  
Brolaco Cattle Co. 956/227-8230  
La Morra Ranch 210/275-0839  
La Muneca Cattle Co. 956/383-7566  
La Negra Cattle Co. 956/607-7408  
LPJ Ranch 956/457-0205  
Monte Christo 956/207-2087  
Reavis Farms 956/207-1447  
RGV Cattle Co. 956/279-2200  
Smith Genetics 512/587-7896  
Top C Cattle Co. 956/499-5129**

***Junior show will once again award \$15,000  
in June. Cattle purchased in sale in April  
will be eligible for show in June!***

**Sale chairman, Javier Moreno,  
956/607-7408  
[javierlncc@aol.com](mailto:javierlncc@aol.com)**



Follow us on Facebook  
for more details.



# RAISING THE BAR

ON QUALITY IN SIMBRAH SIRE POWER—CRITICAL TO HERD IMPROVEMENT AND BREED GROWTH! THESE BULLS HAVE WHAT IT TAKES AND ARE TAKING THE BREED TO NEW LEVELS OF QUALITY!

**SMITH RFI MCCR GANGSTER**



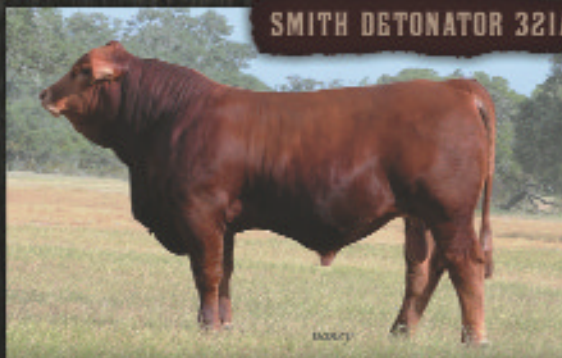
PUREBRED SIMBRAH Sired by SMITH SATISFIES and out of SMITH RFI NUANCED RANKS IN TOP 5% FOR API AND TOP 15% FOR TI OWNED BY SMITH GENETICS, REAVIS FARMS, MCCRARY FARMS AND SOUTHWESTERN FARMS

**SMITH EVAN**



PUREBRED SIMBRAH Sired by SMITH NU APPROACH and out of SMITH BELLA RANKS IN TOP 2% OF THE BREED FOR API AND TI OWNED BY SMITH GENETICS, REAVIS FARMS AND MCCRARY FARMS

**SMITH DETONATOR 321A**



PUREBRED SIMBRAH Sired by SMITH SATISFIES and out of SMITH CIAO BELLA RANKS IN TOP 35% FOR API AND 25% FOR TI OWNED BY SMITH GENETICS, TRIPLE J/CARPENTER RANCH, REAVIS FARMS, SOUTHWESTERN FARMS & 7N RANCH

**SMITH SATISFIES**



PB SIMBRAH Sired by SMITH NF SIMPLY GREAT and out of SMITH GREY MIST RANKS IN THE TOP 2% OF THE BREED FOR API AND 1% FOR TI OWNED BY SMITH GENETICS AND BURCH FARMS

**SMITH FIERCE N BLACK**



2014 HOUSTON RES. GRAND CHAMPION SIMMENTAL. Sired by FLYING 8 CUT ABOVE. OWNED BY SMITH GENETICS & SOUTHWESTERN FARMS.

**SMITH SWFS DIVAS NU MARK**



PB SIMBRAH, SMITH SATISFIES X SMITH WENTZ DIAMOND DIVA. HE RANKS IN THE TOP 15% FOR API AND 2% FOR TI. OWNED BY SMITH GENETICS AND SOUTHWESTERN FARMS, 2015 NATIONAL RES. GRAND BULL

**SMITH STOUT N BLACK**



PUREBRED SIMMENTAL BY DREAM ON. OUT OF TRIPLE C SHE'S AMAZING. RANKS IN THE TOP 15% OF THE BREED FOR API. OWNED BY SMITH GENETICS & REAVIS FARMS.

FOR INFORMATION ON THESE BULLS CONTACT TIM SMITH  
512/587-7896 • SMITHGENETICS1@GMAIL.COM



# BUILDING ROCK SOLID CATTLE



Many thanks to Josh Harris of Harris Farms and Lincoln Lecompte of Bar 5L Farms, for investing in a ROCK SOLID Herd Sire, LMC Red Rock! The championship pedigree and phenotype will impact their herd and the Simbrah breed. LMC Red Rock is packed with champions in his pedigree! Sired by LMC Rocco, arguably as powerful a bull as La Muneca has raised, and out of the many times champion, LMC Dream Girl, LMC Red Rock is a proven herd sire destined for greatness!



We are loaded with LMC Red Rock babies this year, and this show prospect may be the best one at the ranch. At 45 days of age, she is already exploding out of a tough winter! Look for her in the winner's circle next year!



Another great investment by Josh Harris and Lincoln Lecompte! 6G Penelope will be a foundation female in their herd! Her pedigree traces back to 6G LMC Rajun Cajun's maternal granddam, and her sire, LMC Urban Cowboy, was in La Muneca's show string. Maternally, this female may be as good as we can breed, as she represents our most profitable cow family on the ranch!



Foundation Focused Female at 6G Ranch! 6G Ms. Angelica 5X2 is another functional female that we are building our herd around. She is sired by the moderate, muscle machine, LMC Whatabull, and she is a maternal sister to LMC Rajun Cajun. Angelica is a model Simbrah female loaded with maternal abilities! Look for great things from her in the future!



A donor prospect in the making! BHR Jeanette X216 is another outcross line that we are bringing into the Simbrah breed! This female is loaded with outstanding maternal traits along with lots of power! We look forward to sharing her progeny with other Simbrah breeders!



Congratulations to Robert & Amelia Stavinocha on a successful 2014 highlighted by Amelia's win at the Junior Nationals! Look for them this spring hauling around some outstanding show prospects! Good luck!

**6G Ranch**  
simbrah

**Fred & Sharon Grahmann**

Rock Island, TX 77470

Eagle Lake Location: 125 Arrow Road • Eagle Lake, TX 77434

Home: (979) 234-3967

Fred: (979) 758-4759 • Michael: (361) 772-0188 • Leroy: (979) 758-4671

Email us at: msgrah71@yahoo.com





# **STILL MAKING POWERFUL PLAYS**

All Breeders hope to produce a Bull that has what it takes to prove himself in the showring and then go on to produce Future Champions. With "Powerman" we have achieved that goal! "Powerman" calves are here and they are making a Big and Powerful impression, each time they walk in. These three members of the A Team below are just like him. They are wide-bodied, deep, heavy muscled and extremely smooth fronted, making them a great addition to any program with those valuable assets. These offspring are going to continue to make plays in the future, so be sure to add them to your line up in the first round!



the *Elite*



**BARING CATTLE COMPANY**

6128 S. Loop 1604 E-2 Elmhurst, Texas 78112

210/621-0095 (ranch) • 210/667-6651 (trey) • 210/667-6650 (roy)

[www.baringcattlecompany.com](http://www.baringcattlecompany.com) • Se habla español



## Bud Box...

(Continued from page 24)

may force the handler working in the Box to move too deep in the Box to initiate flow. As the handler returns to the correct position, their movement with the cattle will stop flow and turn the cattle back. Going with movement slows it or stops it. Neither response is desirable in getting cattle to flow out of the Box.

Other aspects of a Box design that are critical to success relate to whether or not the sides are enclosed. It is absolutely essential to have the end of the Box open sided so cattle are going to light and will build speed as they enter the Box. Entry speed facilitates the transition and correct flow out of the box. Solid (opaque) panels should be limited to the Box's entry gate and the sides of the box closest to the crowd alley and load out exits. Note - solid sides in these areas are not required but may minimize distractions. Load out and crowd alley exit gates must open back flat against the sides of the Box.

A Box used in loading semi-trailers may require additional depth (30 feet maximum) to facilitate filling compartments quickly. If using this same large box for a crowd alley, the addition of a block gate in the Box to shorten it might be a good solution.

In summary, a Box needs to be 12 to 14 feet wide for most operations and 20 to 30 feet deep depending on the number of cattle needed to flow through the system at any given time. Leave the back open (translucent); cover the sides and entrance gate if necessary.

For additional information on cattle handling and facility design look for Cattle Handling Pointers at <http://beef.tamu.edu>. Go to Publications and look for the Facilities and Equipment section.

## News...

(Continued from page 8)

### New hand at Burch Farms

William Irven Burch was born on February 9, 2015. He weighed 7 lbs. 3 oz. and was 20 inches in length. He is the son of John David and Elizabeth Burch and joins big sister, Emily and big brother, Ben. He is also the grandson of Rickey and Martha Burch.



William Irven Burch

## Reports...

(Continued from page 21)

daughter to the reserve calf title. Both heifers were sponsored by Smith Genetics.

In the junior division, Regan Merryfield was the winner with a Scout daughter from the Hagan program, while Zach Mills won the reserve division title with a Smith Satisfies daughter from Smith Genetics.

In the showmanship portion, Grant Hinckley was the winner of a belt buckle and \$300 in the 9 and under category of showmanship. Bradley Meuth won the 10 and 11-year-old division of showmanship, while Jeremy Friedrich was the reserve. The winners in the 12 and 13-year-old division of showmanship were Zachary Mills, followed by Jacob Friedrich, Trever Jenkins and Logan Perry. The winners in the 14 and 15-year-old division of showmanship were Payton Meuth, Regan Merryfield, Winston Walters, Caryle Rodenbeck, Calley McGinley, Paige Hovey, Clayton Hinckley, Bradley Bilbo, Sophie Palmore, Zachary Willey, Kayla Boyett and Travis Damazio. The winners in the 16 and over age division of showmanship were McClaine Pawelek, Tyler Jenkins, Sydney Paul, Chris Beatty, Andi King, Cary Perry, Cody Westbrook and Payton Cox.

### LMC & Friends Giving THANKS Sale raises \$42,000 for charity and scholarships

"Our LMC & Friends Giving THANKS Online Sale VI was a big success thanks to our donors, bidders, buyers and Tim and Erin Lockhart. We raised \$47,075 for 14 different organizations including the American Junior Brahman, Braunvieh, Hereford and Simbrah associations and several scholarship funds," said Carlos Guerra, owner of La Muneca Cattle (LMC).

The top selling lot was a trophy buck hunt donated by LMC selling for \$7,000 to Tony Cook from Louisiana. The second top selling lot was LMC Polled Gratitude, a double polled Brahman herd bull prospect donated by La Muneca selling for \$5,300 to repeat buyer Jimmy Chapman from Florida.

The sale generated \$18,600 for the Arcadio, Carmen, Rafael and Victor Guerra Memorial Scholarship Fund, which awards over \$30,000 in scholarships every year, including one through the American Junior Simbrah Roundup and the Texas Junior Simmental/Simbrah Association.

"We had 82 bidders from 16 states and buyers from five states. We look forward to making next year's LMC & Friends Giving THANKS Online Sale bigger and better," said Guerra.

*And they just keep getting* **BETTER!**

We're working hard to improve our herd and produce Simbrah cattle that can genetically impact our herd, as well as the breed.

Our offering in the Simbrah Synergy was our best yet and we want to thank our buyers Honeycutt Cattle Co., Pine Ridge Ranch, Monte Christo Cattle Co., Pebble Creek and Southwestern Farms.

Our senior herd sire, Smith Satisfies continues to make headlines in the breed as his progeny are in demand for breeding programs and by juniors, who are taking them to the winner's circle!

**We're on a quest to make this breed better!**



Our program is headlined by Smith Satisfies.



This female is a Satisfies daughter out of our productive donor, 55/326.

## BURCH FARMS

Rickey Burch Family • P.O. Box 755 • Hempstead, Texas 77445

979/826-3231 office • 713/206-2579 cell • [burchfarms@peoplepc.com](mailto:burchfarms@peoplepc.com) • [www.burchcattle.com](http://www.burchcattle.com)



# SIMBRAH World

## SHALLOW WATER RANCH

*Your Leading Source for Black Simbrah Cattle - Since 1993*

REGISTERED BLACK SIMBRAH BULLS FOR SALE

SWR

Bobby & Jeanne  
Thornhill  
21501 CR 496  
Rising Star, TX 76471



SWR Black Chief  
Homozygous black, purebred Simbrah.

SWR

Ranch  
254-643-6715  
Cell  
325-647-4030

Terry Reagan

AUCTIONEER

215 W. Bandera Rd., Ste. 114-B24

Boerne, TX 78006

210-414-4411

Thanks to  
Simbrah Synergy



**Tindle  
Cattle  
Company**

Lott, Texas • 254-721-7462 • 254-721-9615

**SIMMENTAL AND SIMBRAH CATTLE**

**Ronnie Reeves**

9660 FM 713

Dale, Texas 78616

512/507-5719

rrtranspo@yahoo.com

Rockin M

SHOW • SUPPLY

WE'RE YOUR  
*full service*  
SHOW SUPPLY  
TRAILER COMPANY!

Everything exhibitors need on show  
day, as well at home, we have in  
stock in our trailer at the shows.

**CALL TODAY**

to book us for your event! Now  
booking for summer and fall 2014.  
We would love to have our trailer  
at your event for your exhibitors!

We are affiliated with  
Sullivan's Show Supply  
and carry their products  
and grooming supplies.



Come by and visit us at  
the *Elite*

May 9, 2015  
Yoakum, Texas



**Rockin M Show Supply**

Bill R. Meuth, Jr

210.380.1468

stacy@brm-construction.com



Aside from the educational contests and cattle shows, the National Classic features the photography and video contest, recognition of Silver and Gold Merit Award scholarship winners, mentor program, and the AJSA Board of Trustees election.

Junior exhibitors are required to participate in three of the four educational events in order to compete in the cattle show. The educational contests prepare exhibitors for a life-long career in the cattle business by providing basic agricultural knowledge, understanding of the Simmental and Simbrah breeds, public speaking, critical thinking skills and the ability to make informed decisions.

"I guarantee that down the road it's not going to matter

how many purple banners you won with your show animals, but what will set you apart is the experience and knowledge gained from participating in the leadership and educational contests that the AJSA offers," says Tom.

Tim Smith, American Simmental Board of Trustee member and long time breeder is also excited for the event to be in Texas.

"This is an opportunity especially for Simbrah to have tremendous exposure. It's a chance to showcase our breed to other juniors, breeders and to talk about the many attributes of the breed," he adds.

An exciting change effective this summer is an update to the minimum age requirement for junior exhibitors. The prior rule required participants to be nine-years-old as of January 1. The new rule allows individuals eight-years-old as of January 1 to compete in the junior division, exhibiting cattle and participating in the educational contests. Competitors under the age of eight compete as novice and are exposed to the contests early on to begin forming communication skills and agricultural knowledge essential to any cattle operation.

The AJSA Board of Trustees, along with the TJSSA are anxiously awaiting the 2015 National Classic and looking forward to a great turnout of Simmental and Simbrah exhibitors from across the nation.

More details and deadlines on the 2015 AJSA national classic can be found at [www.simmental.org](http://www.simmental.org).

\*\*\*



## Good Luck from LHH!



**LHHI Midnight Rose** is being exhibited by Joe Martinez. She is sired by LMC JWB Amigo 5U/286 (Black Knight) and out of LHH Chloe. Joe and Rose have shown they are quite the pair by earning second place at Fort Worth Stock Show. We are looking forward to the rest of their show season!



Jennifer Gomez will be concluding her show career with **LHH Promise Kept (PK)**. PK is a maternal sibling to LHHI Arnee who led Vanessa to many championships her senior year. By the looks of it, PK will help Jennifer finish her show career with a bang!



**Congratulations** goes out to Emily Denny on selecting this promising show heifer prospect as her first heifer! This baby doll is sired by LMC JWB Amigo 5U/286 (Black Knight) and PHH Dazzler (aka Savannah). We are expecting great things out of this pair and wish Emily all the best as she begins her show career.

# H

**La Hacienda Hinojosa**  
The Hinojosa Family  
Lucas, Norma, Lucas Jr.,  
Daniel and Vanessa



32667 N. Expressway 281 Edinburg, TX 78542  
(956) 381-8933  
[LHHRanch1954@aol.com](mailto:LHHRanch1954@aol.com)  
Find our ranch on Facebook

# H



# Just carrying on the *Family Tradition*

We purchased Smith Priceless Passion, "Baby Goose" because of the respect and appreciation we had for her dam, Smith Priceless and the many members of that cow family. At the time we thought she could be one of the strongest members of that impressive family.

She has not disappointed us — she won many shows, including the 2012 National Reserve Grand title. And now she has entered into production and we couldn't be more pleased! She's just carrying on the family tradition of greatness.

*Smith Priceless Passion "Baby Goose" — A daughter of Smith Priceless and sired by Infinity*



*Walters Smith Jasmine—*

(Smith Matt N Black x Smith Priceless Passion, "Baby Goose")

A Polled Black Three-quarter Blood. API ranking of top 1% of the breed and top 3% for TI.

*Just take a  
look at two  
of her first  
daughters...*



*Smith Walters Pure Passion—*

(Smith Satisfies x Smith Priceless Passion, "Baby Goose")

A Polled Red Baldy Purebred. API ranking of top 10% of the breed and top 5% for TI.

**Semen, embryos and  
show prospects available.**

**WALTERS**  
*Livestock Enterprises*

Val Walters Family

2300 Cook's Crow Road, Brenham, Texas 77833

979-277-2817 • [vwalters@bettsfirm.com](mailto:vwalters@bettsfirm.com)

[walterslivestockenterprises.com](http://walterslivestockenterprises.com)

Rodney Finch, General Manager of Livestock Operations

979-224-2101 • [rcrodneyfinch@gmail.com](mailto:rcrodneyfinch@gmail.com)





KENTUCKY DIVISION  
Quarter Horses, Simmental and Simbrah Cattle

Bill and Ginny Smith, Susan and Ray Dieckmann, Paula Duncan  
For information contact Tim Smith, smithgenetics1@gmail.com • 512/587-7896



## LOST CAUSE RANCH

Jody Matejicek  
7189 CR 180 • Anderson, Texas 77830  
979/224-3121 (c)  
lostcauseranch@yahoo.com



- \* Semen & Embryo Sales
- \* A.I. & ET Equipment Sales
- \* MME & Taylor Wharton Tanks
- \* A.I. / Palpation Clinics
- \* TruTest Scales
- \* Professional Exporting & Importing
- \* Semen & Embryo Warehousing
- \* A.I. Consultation

### Bovine Elite, LLC

3300 Longmire Drive • College Station, Texas 77845  
800-786-4066 • 979-693-0388 • 979-693-7994 Fax  
carl@bovine-elite.com • www.bovine-elite.com

## RAFTER M CATTLE

*With the combination of good genetics and good people,  
we are sure our cattle will meet all your Simbrah needs!*



Joe, Julie & Jennifer Mask  
Simbrah, Simbravieh & Braunvieh  
979/531-0192 • www.raftermcattle.com

## CMAN Cattle Co.



Robert, Darlene, Danielle and Jessica Seaman  
17755 Kitzman Rd.  
Cypress, TX 77429

(832) 264-7766 tel • (281) 345-9201 fax  
seaman.robert@gmail.com

## TRIPLE P RANCH

Harvey and Marcy Popp  
Pearland, TX  
713/906-3992  
happytrails1029@yahoo.com



## SIMBRAH CATTLE LITTLEFOOT CATTLE COMPANY

Doug, Karen, Daniel and Kevin Lightfoot

4410 Meyer Road • Needville, Texas 77461  
Home: 979/793-3482 • Cell: 832/473-0671  
[dlitefoot@yahoo.com](mailto:dlitefoot@yahoo.com) • [www.Littlefootcattle.com](http://www.Littlefootcattle.com)

## KNEZEK SIMMENTAL/SIMBRAH RANCH



Red and Black Show Heifers,  
Bulls & Steers  
Call For Your Next Champion -  
Superbowl Eligible!

Brian Knezek  
2140 Morris Community Road  
Yoakum, Texas 77995  
361/293-1590 Mobile  
[knezek@gvec.net](mailto:knezek@gvec.net)  
[www.knezeksimmentalranh.com](http://www.knezeksimmentalranh.com)

## KATHY HUTTO & JEFFREY REED

9660 FM 713  
Dale, Texas 78616  
512/507-5718

Embryos for sale sired by Charismatic  
**Simmental and Simbrah**

For cattle information contact Tim Smith, 512/587-7896



Featuring Sargeant daughters

## STARTING WITH THE BEST BURESH CATTLE



We have the influence of Priceless in our young program.

Bob Buresh  
5152 Loma Alta Drive • Frisco, Texas 75035  
For information contact our consultant,  
Tim Smith, 512/587-7896





*Save the date...*

- March 3-Houston International Simbrah Sale, Houston, Texas
- March 4-Houston International Simbrah Show, Houston, Texas
- March 15-Houston Livestock Show Junior Simbrah Show, Houston, Texas
- March 18-Rio Grande Valley Junior Simbrah Show, Mercedes, Texas
- March 19-Rio Grande Valley Open Simbrah Show, Mercedes, Texas
- March 19-MAS X Showmanship Clinic & Show, Rio Grande Valley Show, Mercedes, Texas
- March 27-Star of Texas Junior Simbrah Show, Austin, Texas
- March 27-LMC \$10,000 Jackpot Show at La Muneca Ranch, Linn, Texas
- March 28-LMC \$20,000 \$ellabration Show, Linn, Texas
- March 28-31-LMC GenePLUS Online Sale VII
- April 19-21-MAS Online Sale
- May 1-5-LMC GenePLUS Online Sale VIII
- May 6-9-The Elite Simmental/Simbrah Online Sale
- May 9-Live Closeout of Elite Sale and \$25,000 Elite Show
- June 11-14-TJSSAFuturity, Bryan, Texas
- June 25-MAS X Showdown, Crescent (Wharton), Texas
- June 25-27-American Junior Simbrah Roundup, Crescent (Wharton), Texas
- July 4 - 7-LMC GenePLUS Online Sale IX
- July 5-12-AJSANational Classic, Bryan, Texas
- August 29-September 1-LMC GenePLUS Online Sale X
- October 23-25-Simbrah Synergy VIII, Giddings, Texas
- November 21-21-LMC Giving THANKS Online Sale XI

## Index To Advertisers .....

6G Cattle Co. ....	34	Bob and Tammy Mairano.....	28
7N Ranch .....	3,4,19, 33	MAS X Simbrah Sale & Show .....	32
Bar 5LFarms.....	8	McCrary Farms.....	10, 19, 33
Baring Cattle Co .....	35	Monte Christo Ranch .....	19, 26
BETM Ranch.....	21	Mossy Creek Ranch .....	38
Boeing Brs .....	25	Pebble Creek Farms .....	28
Bovine Elite.....	38	Pine Ridge Ranch .....	22,23
Burch Farms.....	33,36, 42	Reagan, Terry .....	37
Brolaco Cattle Co .....	25	Reavis Farms.....	4, 19,33, 42, IBC
Buresh .....	40	Reed, Jeffrey.....	40
CMAN Cattle Co.....	40	Reeves, Ronnie .....	37
Diamond RF Farms .....	9, 42	RFI Real Deal.....	42
Elite Simmental/Simbrah.....	11	RGV Cattle Co. ....	27
H3 Harris Farms Simbrah .....	8	Rio Grande Valley Breeders .....	27
Hagan Cattle Co.....	17	Rocking M Show Supply.....	37
Hallak Ranch.....	21	Shallow Water Ranch .....	37
Hutto, Kathy .....	40	Smith Farms.....	29
Knezek's Simmental/Simbrah .....	40	Smith Genetics.....	4, 7,19, 33, 42
La Blanquita Ranch .....	27	Smith Kentucky.....	40
La Hacienda Hinojosa .....	27, 38	Smith McCrary Fireball.....	19
La Morra Ranch .....	46	Southwestern Farms.....	IFC, 19, 33, 42
La Muneca Cattle Co. ....	27, BC	Temperance Cattle Co. ....	28
La Negra Cattle Co. ....	27	Tindle Cattle Co.....	37
Lazy SF Ranch.....	25	Top C Cattle Co. ....	27
Littlefoot Cattle Co.....	40	Triple J Ranch.....	5, 33
LPJ Ranch.....	27, 29	Triple PRanch .....	40
Johnson Cattle Co.....	9,19	Walters Cattle Co. ....	39

Simbrah World is an 8 1/2 x 11 publication, produced by Southern Livestock Publishing and provides news for and about the Simbrah breed.

### Space Rates:

Size:	B&W :	1 Extra Color:	4/Color:
Full Page	\$725.00	\$875.00	\$1,100
2/3 Page	575.00	725.00	950.00
1/2 Page	440.00	590.00	815.00
1/3 Page	350.00	500.00	725.00
1/4 Page	220.00	370.00	595.00

### Deadlines for Publications

Spring Issue-February 1st

Fall Issue-September 1st

### COPY AND CONTRACT REGULATIONS

Advertisers and advertising agencies assume liability for all content of advertisements printed, and also assume liability for any claims arising from any such advertisements made against the publisher. The publisher reserves the right to reject advertising, which is felt unsuitable for publication.

### EDITORIAL POLICY

Opinions expressed are the writer's and not necessarily those of Simbrah World.

### LAYOUTS AND PROOFS

Although every effort will be made to provide proofs to advertisers on all ads, we only guarantee proofs on ads that arrive in the Southern Livestock Publishing office prior to or on deadline.

### Simbrah Publications Committee

Bill Travis, Carlos Guerra, Tim Smith, Trey Baring, Cody Witzkoski, Craig Schultz, Doug Schultz and Richard Foster.

### Southern Livestock Publishing, Inc.

#### Mailing Address:

P.O. Box 791364 • San Antonio, TX 78279-1364

#### Office Located:

407 Breesport • San Antonio, TX 78216

Phone: 210/524-9697

Fax: 210/524-9690

E-mail: [slivestock@southernlivestock.com](mailto:slivestock@southernlivestock.com)



# Evaluate him any way you want... he's the *Real Deal*



The first public offering of **Real Deal** sired calves generated tremendous interest at the Simbrah Synergy VII Sale. Twelve of his calves sold for an **average of \$5,129**. His calves were in demand and are now at work in a number of programs across the breed.



*This RFI Real Deal daughter from the Smith/ CRC Partnership sold for \$10,500 to junior exhibitor, Chloe Novak and at her first major in Fort Worth won her class.*

- Sired by Smith Evan, who is out of Smith Nu Approach and the great Smith Bella Bella.
- Dam, RFI Dominoe, a Smith Also N Red daughter, which provides the genetics of Sargeant, Dream On and Power Drive. She is a donor in the Reavis herd.
- He ranks in the top 3% of the breed for weaning and 10% for yearling, plus 30% for API and 10% for TI.
- Polled, solid red, deep bodied purebred Simbrah.
- 2014 ASA National and National Simbrah Grand Champion Bull, as well as 2014 International Reserve Grand Champion Bull.
- Real Deal was produced in the Reavis Farms program and is now owned in partnership with Smith Genetics, Burch Farms, Diamond RF Farms and Southwestern Farms.

## He is for real, 100% authentic. FOREIGN SEMEN SALES ONLY.

### OWNERS:

Reavis Farms  
958-207-1447

Smith Genetics  
512-587-7896

Burch Farms  
713-28-2579

Diamond RF Farms  
713-412-4487

Southwestern Farms  
409-423-9060

Contact Tim Smith  
512-587-7896  
smithgenetics1@gmail.com



# RFI the PREFIX

These individuals all wear the RFI prefix and we are very proud of the contributions they are making to our program, our customers' programs and the breed!

RFI She's For Real



We sold this heifer in the recent Synergy Sale. She was our first Real Deal baby and to say we are excited about this calves, would be an understatement. She sold for \$10,000 to 7N Ranch and Southwestern Farms and we're anticipating great things from her.

RFI Red Raider



A three-quarter son of Evan and out of a Whetland bred Simmental cow. He ranks in the top 1% of the breed for API and top 10% for TI. He is now owned by Monte Christo Cattle Co.

RFI Debutante



A daughter of our donor, Topanga Debutante was the 2014 ASA National, San Antonio National and International Reserve Senior Champion Female. Sired by NF Simply Great. She is now in our donor program and her daughter Smith RFI Sweet Deb, pictured below, was just named the 2015 National Champion. Owned with Smith Genetics.

Smith RFI Sweet Deb



Sired by Smith Nu Approach and out of RFI Debutante. She won the calf division on her way to the 2015 National Grand Champion Female title.

RFI Duchess Top Duchess 378A



A NF Smith Sargeant daughter also out of the LMC Topanga 5T/58 cow. She is a maternal sister to Debutante. Duchess is now owned by Sophie Palmore. She was named the 2015 National Junior Champion Female.

## THANK YOU TO OUR SYNERGY BUYERS:

Monte Christo Cattle Co., Wentz Cattle Co., 7N Ranch, Southwestern Farms, McCrary Farms, Smith Genetics and Hayden Hackett.

**RFI...** watch for our cattle selling in MAS X Online Sale, April 19-21.

**REAVIS FARMS, INC.**

WAYNE & JIM BOB REAVIS  
956-585-6831

6801 W. Mile 7 Road, Mission, TX 78574  
www.reavisfarms.com • WReavis@aol.com

Calf scramble certificates welcome.



Reavis Cattle eligible for Synergy, MAS and Superbowl Shows.





# THANK YOU!!

As we begin our 30th year of breeding registered Simbrah cattle and 51st year of breeding registered cattle, we want to express our gratitude to the hundreds of good people that have believed and continue to believe in our cattle and how we do business. The cattle business is at an all time high right now with all facets of it being profitable. We look forward to sharing our genetics with you private treaty and at our upcoming LMC GenePLUS Online Sales & other LMC events.

**LMC BBS MANZIEL** is a new junior herd sire sired by 6G LMC Rajin Cajun and the popular BBS Jenny Walker. He is truly **A COWMAN'S KINDA BULL**, has 46 CM testicles at 13 months of age and offers the total package !! There are 9 full and maternal sisters to him showing this spring. Co owned with Boening Bros. Simbrah.



When in the market for some new Brahman Blood, come see our World Class **POLLED** Brahman cattle whose genetics are being exported all over the Brahman World and 15 states. Photo of LMC ECC Polled X Factor owned with England Cattle Co. and T Miller.



A **BIG HEARTY THANKS** goes out to all of our LMC GenePLUS Online Sale Buyers. We like these sales and all of the new people that they attract. We are very proud to have raised \$47,000 for charity & scholarships in our LMC & Friends Giving **THANKS** sale last fall.



We are going to sell some awesome cattle at everyone of our upcoming LMC GenePLUS Online Sales headed up by an IVF Flush on the one and only International & National Champion LMC WFC Dream Girl in our March sale. This is a **ONCE IN A LIFETIME OPPORTUNITY!!**



Our multi-generation Simbravieh cattle continue to impress our clients as they go out and perform under the toughest of conditions and are also winning their share of championships for our heifer and show steer clients. Come get you some !!



**GOOD LUCK** to all of our LMC Juniors at all shows that they will attend this year. They are all great Ambassadors for Simbrah. We look forward to seeing all of you at our upcoming LMC Jackpot and LMC Sellabration Shows on March 27-28 at LMC.



**LMC LF Making Dreams** is a new 3/4 x 1/4 junior herd sire for LMC sired by the popular WS Beefmaker and the great LMC WFC Dream Girl. He offers **NEW BLOOD** and great numbers (top 1% for API and TI). We have a great set of bulls coming off test soon. Come see them !!



**CONGRATULATIONS** to all of our recent winners. Photo of Josh Evans who won Reserve at the State Fair. Recent winners are Kace Owen, Leah Thibodeaux, Zoe Rosas and Tucker Tanner. We look forward to a successful show season with our great LMC Junior Team.

## Upcoming LMC Events

**March 27, 2015**

LMC Annual \$10,000 Jackpot

**March 28, 2015**

LMC \$20,000 Sellabration Show IV

**March 28 - 31, 2015**

LMC GenePLUS Online Sale VII

**May 1 - 5, 2015**

LMC GenePLUS Online Sale VIII

**July 4 - 7, 2015**

LMC GenePLUS Online Sale IX

**August 29 - September 1, 2015**

LMC GenePLUS Online Sale X

**October 3, 2015**

LMC 28th Annual Jr. Round Up & Futurity

**November 21 - 24, 2015**

LMC & Friends Giving **THANKS** Online Sale XI

  
**La Muñeca Cattle Co.**

Simbrahs, Simbraviehs & POLLED Brahmans

**CARLOS & SISTER GUERRA FAMILY**

PO Box 81 • Linn, TX 78563

956-383-7566 (Office)

Carlos 802-1641 • Victor 607-5515

Carlos Jr. 330-1963

email: [LaMuñecaCattle@aol.com](mailto:LaMuñecaCattle@aol.com)

Please visit our website at

[www.LaMuñecaCattle.com](http://www.LaMuñecaCattle.com)